

section 5

valves & line products

COPPER TUBE

ARDENT ANNEALED COPPER TUBE (COILS)	5.1
ARDENT PAIR COIL	5.1
KEMBLA ANNEALED COPPER TUBE (COILS)	5.1
KEMBLA PAIR COIL	5.2
KEMBLA PAIRCOILMAX (FIRE RATED)	5.2
CAPILLARY TUBE PACKS	5.2
KEMBLA HARD DRAWN COPPER TUBE	5.3

PIPE INSULATION

ARMAFLEX FIRE RATED PIPE INSULATION	5.4
ACCOFLEX STANDARD PIPE INSULATION	5.4
SHEET INSULATION	5.5
ARMAFLEX FIRE RATED SELF-SEAL PIPE INSULATION	5.5
ARMAFLEX FIRE RATED CONTI-COIL PIPE INSULATION	5.5
ADHESIVE	5.5

COPPER FITTINGS

COPPER ELBOWS 90° (FEMALE/FEMALE)	5.6
COPPER ELBOWS 45° (FEMALE/FEMALE)	5.6
COPPER ELBOWS 90° (MALE/FEMALE)	5.7
COPPER TEE	5.7
COPPER COUPLINGS (FEMALE/FEMALE)	5.8
COPPER BUSHES (MALE/FEMALE)	5.9
COPPER P-TRAPS	5.9
COPPER BONNETS	5.9
COPPER FLARE WASHER	5.10
COPPER PIPE CLIP	5.10
COPPER END CAPS (STOP ENDS)	5.10
COPPER Y PIECES	5.11
COPPER ELBOWS 180° (FEMALE/FEMALE)	5.11

BRASS FITTINGS

BRASS FLARE NUTS	5.11
BRASS UNIONS	5.12
BRASS SOLDER UNIONS	5.13

BRASS SWIVEL UNIONS	5.13
BRASS TEES	5.13
BRASS ELBOWS	5.13
BRASS CAPS	5.13
BRASS PLUGS	5.14
CYLINDER ADAPTORS	5.14

DRIERS

LIQUID LINE FILTER DRIERS	5.14
BI-FLOW HEAT PUMP DRIERS	5.15
DEMOUNTABLE DRIER SHELLS	5.15
DEMOUNTABLE DRIER CORES	5.15
DOMESTIC FILTER DRIER	5.15
SUCTION BURN-OUT DRIERS	5.16

SIGHT GLASSES

SIGHT GLASSES	5.16
---------------	------

CRANKCASE PRESSURE REGULATOR

CRANKCASE PRESSURE REGULATOR	5.16
------------------------------	------

OIL SEPERATORS (INTERNAL FLOAT)

OIL SEPERATORS (INTERNAL FLOAT)	5.17
---------------------------------	------

SUCTION ACCUMULATORS

SUCTION ACCUMULATORS	5.17
----------------------	------

LIQUID RECEIVERS

LIQUID RECEIVERS	5.17
------------------	------

VIBRATION ELIMINATORS

VIBRATION ELIMINATORS	5.17
-----------------------	------

VALVES

SOLENOID VALVE & COILS	5.18
PACKED CAP (ANGLE) VALVES	5.18
LINE VALVES	5.18
BALL VALVES	5.19
HENRY 3 IN 1 BALL VALVE	5.19
WATER REGULATING VALVES	5.19
ACCESS (SCHRADER) VALVES	5.20
REVERSING VALVES	5.20
ROTALOCK VALVES	5.21
DANFOSS TX VALVES (FLARE)	5.21
DANFOSS TX VALVES (SOLDER)	5.21
DANFOSS T2 TX VALVE ORIFICE WITH FILTER	5.21

ARDENT ANNEALED COPPER TUBE (COILS)



REECE CODE	DESCRIPTION
9800010	ARDENT ANN REF CU R410A 1/4" 6X0.81X30M
9800012	ARDENT ANN REF CU R410A 3/8" 9X0.81X18M
9800013	ARDENT ANN REF CU R410A 1/2" 12X0.81X18M
9800014	ARDENT ANN REF CU R410A 5/8" 15X1.02X18M
9800015	ARDENT ANN REF CU R410A 3/4" 19X1.14X18M

KEMBLA ANNEALED COPPER TUBE (COILS)



REECE CODE	DESCRIPTION
802767	KEMBLA ANN REFRIG COPPER 1/4" 6 X 0.81 R410A 30M
802540	KEMBLA ANN REFRIG COPPER 5/16" 8 X 0.91 R410A 30M
802544	KEMBLA ANN REFRIG COPPER 3/8" 9 X 0.81 R410A 18M
802543	KEMBLA ANN REFRIG COPPER 1/2" 12 X 0.81 R410A 18M
802580	KEMBLA ANN REFRIG COPPER 5/8" 15 X 1.02 R410A 18M
802581	KEMBLA ANN REFRIG COPPER 3/4" 19 X 1.14 R410A 18M
802585	KEMBLA ANN REFRIG COPPER 5/8" 15 X 0.91 18M
802595	KEMBLA ANN REFRIG COPPER 3/4" 19 X 0.91 18M
802605	KEMBLA ANN REFRIG COPPER 7/8" 22 X 0.91 18M

ARDENT PAIR COIL



REECE CODE	DESCRIPTION
9800006	ARDENT PAIR COIL 1/4" X 1/2" R410A 20M
9800005	ARDENT PAIR COIL 1/4" X 3/8" R410A 20M
9800007	ARDENT PAIR COIL 1/4" X 5/8" R410A 20M
9800009	ARDENT PAIR COIL 3/8" X 3/4" R410A 20M
9800008	ARDENT PAIR COIL 3/8" X 5/8" R410A 20M

KEMBLA PAIR COIL



REECE CODE	DESCRIPTION
802496	KEMBLA PAIR COIL 1/2" X 3/4" R410A 20M
802491	KEMBLA PAIR COIL 1/4" X 1/2" R410A 20M
802490	KEMBLA PAIR COIL 1/4" X 3/8" R410A 20M
802492	KEMBLA PAIR COIL 1/4" X 5/8" R410A 20M
802493	KEMBLA PAIR COIL 3/8" X 1/2" R410A 20M
802495	KEMBLA PAIR COIL 3/8" X 3/4" R410A 20M
802494	KEMBLA PAIR COIL 3/8" X 5/8" R410A 20M

KEMBLA PAIRCOILMAX (FIRE RATED)



REECE CODE	DESCRIPTION
802497	PAIRCOILMAX FR 13MM 6.35- 9.52 R410A 20M COIL
802498	PAIRCOILMAX FR 13MM 6.35-12.70 R410A 20M COIL
802499	PAIRCOILMAX FR 13MM 9.52-15.88 R410A 20M COIL
802501	PAIRCOILMAX FR 13MM 6.35-15.88 R410A 20M COIL
802502	PAIRCOILMAX FR 19MM 6.35- 9.52 R410A 18M COIL
802503	PAIRCOILMAX FR 19MM 6.35-12.70 R410A 18M COIL
802504	PAIRCOILMAX FR 19MM 6.35-15.88 R410A 18M COIL
802505	PAIRCOILMAX FR 19MM 9.52-15.88 R410A 18M COIL

CAPILLARY TUBE PACKS



REECE CODE	DESCRIPTION
2701841	0.66MM X 3.66M CAPILLARY TUBE PACK
2701842	2.04MM X 3.05M CAPILLARY TUBE PACK
2701843	2.24MM X 3.66M CAPILLARY TUBE PACK
2701844	0.80MM X 3.66M CAPILLARY TUBE PACK
2701845	0.90MM X 3.66M CAPILLARY TUBE PACK
2701846	1.1MM X 4.27M CAPILLARY TUBE PACK
2701847	1.2MM X 4.27M CAPILLARY TUBE PACK
2701848	1.3MM X 4.27M CAPILLARY TUBE PACK
2701849	1.4MM X 3.66M CAPILLARY TUBE PACK
2701850	1.5MM X 3.66M CAPILLARY TUBE PACK
2701851	1.62MM X 3.05M CAPILLARY TUBE PACK
2701852	1.78MM X 3.66M CAPILLARY TUBE PACK
2701853	1.9MM X 2.75M CAPILLARY TUBE PACK

KEMBLA HARD DRAWN COPPER TUBE



REECE CODE	DESCRIPTION	SIZE	LENGTH (M)
R410A			
802700	KEMBLA HD REFRIG TUBE	(1/4") 6 X 0.91	6
802717	KEMBLA HD REFRIG TUBE	(1/4") 6 X 0.81	6
802718	KEMBLA HD REFRIG TUBE	(3/8") 10 X 0.81	6
802705	KEMBLA HD REFRIG TUBE	(3/8") 10 X 0.91	6
802719	KEMBLA HD REFRIG TUBE	(1/2") 12 X 0.81	6
802715	KEMBLA HD REFRIG TUBE	(1/2") 12 X 0.91	6
802741	KEMBLA HD REFRIG TUBE	(5/8") 15 X 1.02	6
802742	KEMBLA HD REFRIG TUBE	(3/4") 19 X 1.14	6
802743	KEMBLA HD REFRIG TUBE	(7/8") 22 X 1.40	6
802734	KEMBLA HD REFRIG TUBE	(7/8") 22 X 1.63	6
802744	KEMBLA HD REFRIG TUBE	(1") 25 X 1.63	6
802752	KEMBLA HD REFRIG TUBE	(1 1/8") 28 X 1.83	6
802764	KEMBLA HD REFRIG TUBE	(1 1/4") 32 X 2.03	6
802761	KEMBLA HD REFRIG TUBE	(1 3/8") 35 X 2.03	6
802762	KEMBLA HD REFRIG TUBE	(1 5/8") 42 X 2.41	6
20 GAUGE			
802720	KEMBLA HD REFRIG TUBE	(5/8") 15 X 0.91	6
802730	KEMBLA HD REFRIG TUBE	(3/4") 19 X 0.91	6
802740	KEMBLA HD REFRIG TUBE	(7/8") 22 X 0.91	6
802750	KEMBLA HD REFRIG TUBE	(1") 25 X 0.91	6
802760	KEMBLA HD REFRIG TUBE	(1 1/8") 28 X 0.91	6
802770	KEMBLA HD REFRIG TUBE	(1 1/4") 32 X 0.91	6
802780	KEMBLA HD REFRIG TUBE	(1 3/8") 35 X 0.91	6
802800	KEMBLA HD REFRIG TUBE	(1 5/8") 42 X 0.91	6
802771	KEMBLA HD REFRIG TUBE	(2 1/8") 53 X 0.91	6
19 GAUGE			
802725	KEMBLA HD REFRIG TUBE	(3/4") 19 X 1.02	6
18 GAUGE			
802735	KEMBLA HD REFRIG TUBE	(7/8") 22 X 1.22	6
802745	KEMBLA HD REFRIG TUBE	(1") 25 X 1.22	6
802755	KEMBLA HD REFRIG TUBE	(1 1/8") 28 X 1.22	6
802765	KEMBLA HD REFRIG TUBE	(1 1/4") 32 X 1.22	6
802775	KEMBLA HD REFRIG TUBE	(1 3/8") 34 X 1.22	6
802785	KEMBLA HD REFRIG TUBE	(1 1/2") 38 X 1.22	6
802795	KEMBLA HD REFRIG TUBE	(1 5/8") 41 X 1.22	6
802807	KEMBLA HD REFRIG TUBE	(2") 50 X 1.22	6
802825	KEMBLA HD REFRIG TUBE	(2 1/8") 53 X 1.22	6
802840	KEMBLA HD REFRIG TUBE	(2 5/8") 66 X 1.22	6
16 GAUGE			
802753	KEMBLA HD REFRIG TUBE	(1 1/8") 28 X 1.63	6
802820	KEMBLA HD REFRIG TUBE	(2 1/8") 54 X 1.63	6
802768	KEMBLA HD REFRIG TUBE	(2 5/8") 66 X 1.63	6

ARMAFLEX FIRE RATED PIPE INSULATION (2MTR LENGTHS)



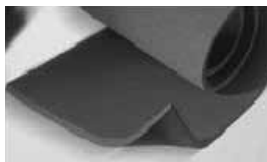
PIPE SIZE		WALL THICKNESS			
(MM)	(INCHES)	9MM	13MM	19MM	25MM
6	1/4"	1904199	1904299		
10	3/8"	1904200	1904300	1904380	1904398
12	1/2"	1904205	1904305	1904381	1904399
15	5/8"	1904210	1904310	1904382	1904402
20	3/4"	1904215	1904315	1904383	1904403
22	7/8"	1904220	1904320	1904384	1904404
25	1"	1904225	1904325	1904385	1904407
28	1 1/8"	1904231	1904331	1904386	1904408
32	1 1/4"	1904240	1904340	1904387	1904409
35	1 3/8"	1904245	1904345	1904388	1904410
40	1 1/2"	1904248	1904350	1904422	1904423
42	1 5/8"	1904250	1904355	1904389	1904405
50	2"	1904255	1904365	1904390	1904429
54	2 1/8"	1904251	1904366	1904391	1904410
60	2 3/8"		1904370	1904392	1904470
67	2 5/8"	1904256	1904371	1904393	1904415
76	3"	1904257	1904372	1904394	1904472
80	3 3/16"			1904395	1904473
89	3 1/2"		1904373	1904483	1904474
101	4"		1904375	1904396	1904475
114	4 1/2"		1904376	1904397	1904476

ACCOFLEX STANDARD PIPE INSULATION (2MTR LENGTHS)



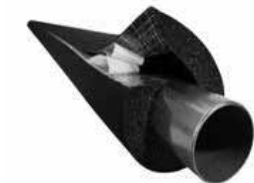
PIPE SIZE		WALL THICKNESS			
(MM)	(INCHES)	9MM	13MM	19MM	25MM
6	1/4"	1904183	1904270		
10	3/8"	1904187	1904271	1904285	1904555
12	1/2"	1904188	1904272	1904286	1904556
15	5/8"	1904189	1904273	1904287	1904557
20	3/4"	1904191	1904274	1904288	1904558
22	7/8"	1904192	1904275	1904289	1904559
25	1"	1904196	1904276	1904290	1904560
28	1 1/8"	1904197	1904277	1904291	1904561
32	1 1/4"	1904260			1904562
35	1 3/8"	1904198	1904278	1904292	1904563
42	1 5/8"	1904261	1904279	1904293	1904564
50	2"	1904262	1904280	1904294	
54	2 1/8"		1904281	1904295	1904565
60	2 3/8"			1904296	1904566
67	2 5/8"		1904282	1904297	1904567
76	3"		1904283	1904298	1904568
80	3 3/16"		1904284	1904301	

SHEET INSULATION



REECE CODE	DESCRIPTION
1904655	ARMAFLEX INSULATION 6MM X 1MTR X 1.5MTR
1904656	ARMAFLEX INSULATION 9MM X 1MTR X 1.5MTR
1904657	ARMAFLEX INSULATION 13MM X 1MTR X 1.5MTR
1904658	ARMAFLEX INSULATION 19MM X 1MTR X 1.5MTR
1904659	ARMAFLEX INSULATION 25MM X 1MTR X 1.5MTR
1904660	ARMAFLEX INSULATION 13MM X 1MTR X 8MTR
1904661	ARMAFLEX INSULATION 19MM X 1MTR X 6MTR
1904662	ACCOFLEX INSULATION 10MM X .915MTR X 1.22MTR
1904663	ACCOFLEX INSULATION 13MM X 1MTR X 1.5MTR
1904664	ACCOFLEX INSULATION 19MM X 1MTR X 1.5MTR
1904665	ACCOFLEX INSULATION 25MM X 1MTR X 1.5MTR

ARMAFLEX FIRE RATED SELF-SEAL PIPE INSULATION



(MM)	PIPE SIZE		WALL THICKNESS	
	(INCHES)	9MM	13MM	
10	3/8"	1904620	1904630	
12	1/2"	1904621	1904631	
15	5/8"	1904622	1904632	
20	3/4"	1904623	1904633	
22	7/8"	1904624	1904634	
25	1"	1904625	1904635	
28	1 1/8"	1904626	1904636	
32	1 1/4"	1904627	1904637	
35	1 3/8"	1904628	1904638	
42	1 5/8"	1904629	1904639	

ARMAFLEX FIRE RATED CONTI-COIL PIPE INSULATION



(MM)	PIPE SIZE		9MM WALL		13MM WALL	
	(INCHES)	REECE CODE	BOX QTY (M)	REECE CODE	BOX QTY (M)	
6	1/4"	1904640	70	1904647	45	
10	3/8"	1904641	50	1904648	35	
12	1/2"	1904642	45	1904649	32	
15	5/8"	1904643	40	1904650	32	
20	3/4"	1904644	34	1904651	28	
22	7/8"	1904645	30	1904652	26	
28	1 1/8"	1904646	26	1904653	20	

PIPE INSULATION ADHESIVE

REECE CODE	DESCRIPTION
1904477	500ML ARMAFLEX ADHESIVE
1904478	1 LITRE ARMAFLEX ADHESIVE

COPPER ELBOWS 90° (FEMALE/FEMALE)



REECE CODE	DESCRIPTION
411081	REFRIG ELBOW 90 F & F R410A 1/4"
411082	REFRIG ELBOW 90 F & F R410A 3/8"
411083	REFRIG ELBOW 90 F & F R410A 1/2"
411084	REFRIG ELBOW 90 F & F R410A 5/8"
411380	REFRIG ELBOW 90 F & F R410A 3/4"
411381	REFRIG ELBOW 90 F & F R410A 7/8"
2701908	REFRIG ELBOW 90 F & F R410A 1"
411382	REFRIG ELBOW 90 F & F R410A 1 1/8"
2702280	REFRIG ELBOW 90 F & F R410A 1 1/4"
411383	REFRIG ELBOW 90 F & F R410A 1 3/8"
411384	REFRIG ELBOW 90 F & F R410A 1 5/8"
411088	REFRIG ELBOW 90 F & F (L/RAD) 1 1/8"
411089	REFRIG ELBOW 90 F & F (L/RAD) 1 1/4"
411090	REFRIG ELBOW 90 F & F (L/RAD) 1 3/8"
411091	REFRIG ELBOW 90 F & F (L/RAD) 1 1/2"
411092	REFRIG ELBOW 90 F & F (L/RAD) 1 5/8"
411093	REFRIG ELBOW 90 F & F (L/RAD) 2"
411094	REFRIG ELBOW 90 F & F (L/RAD) 2 1/8"
411096	REFRIG ELBOW 90 F & F (L/RAD) 2 5/8"
411110	REFRIG ELBOW 90 F & F (S/RAD) 1/2"
411115	REFRIG ELBOW 90 F & F (S/RAD) 5/8"
411120	REFRIG ELBOW 90 F & F (S/RAD) 3/4"
411125	REFRIG ELBOW 90 F & F (S/RAD) 7/8"
411130	REFRIG ELBOW 90 F & F (S/RAD) 1"
411135	REFRIG ELBOW 90 F & F (S/RAD) 1 1/8"
411140	REFRIG ELBOW 90 F & F (S/RAD) 1 1/4"
411145	REFRIG ELBOW 90 F & F (S/RAD) 1 3/8"
411150	REFRIG ELBOW 90 F & F (S/RAD) 1 1/2"
411155	REFRIG ELBOW 90 F & F (S/RAD) 1 5/8"
411160	REFRIG ELBOW 90 F & F (S/RAD) 2 1/8"
411165	REFRIG ELBOW 90 F & F (S/RAD) 2 5/8"

COPPER ELBOWS 45° (FEMALE/FEMALE)



REECE CODE	DESCRIPTION
411219	REFRIG ELBOW 45 F & F R410A 3/8"
411220	REFRIG ELBOW 45 F & F R410A 1/2"
411225	REFRIG ELBOW 45 F & F R410A 5/8"
411385	REFRIG ELBOW 45 F & F R410A 3/4"
411386	REFRIG ELBOW 45 F & F R410A 7/8"
411240	REFRIG ELBOW 45 F & F R410A 1"
411387	REFRIG ELBOW 45 F & F R410A 1 1/8"
411388	REFRIG ELBOW 45 F & F R410A 1 3/8"
411389	REFRIG ELBOW 45 F & F R410A 1 5/8"
411245	REFRIG ELBOW 45 F & F 1 1/8"
411246	REFRIG ELBOW 45 F & F 1 1/4"
411250	REFRIG ELBOW 45 F & F 1 3/8"
411251	REFRIG ELBOW 45 F & F 1 1/2"
411255	REFRIG ELBOW 45 F & F 1 5/8"
411260	REFRIG ELBOW 45 F & F 2 1/8"
411261	REFRIG ELBOW 45 F & F 2 5/8"

COPPER ELBOWS 90° (MALE/FEMALE)



REECE CODE	DESCRIPTION
411310	REFRIG ELBOW 90 M & F R410A 3/8"
411315	REFRIG ELBOW 90 M & F R410A 1/2"
411320	REFRIG ELBOW 90 M & F R410A 5/8"
409616	REFRIG ELBOW 90 M & F R410A 3/4"
409617	REFRIG ELBOW 90 M & F R410A 7/8"
409618	REFRIG ELBOW 90 M & F R410A 1"
411340	REFRIG ELBOW 90 M & F 1 1/8"
411345	REFRIG ELBOW 90 M & F 1 3/8"
411350	REFRIG ELBOW 90 M & F 1 5/8"
411355	REFRIG ELBOW 90 M & F 2 1/8"
411356	REFRIG ELBOW 90 M & F 2 5/8"

COPPER TEE



REECE CODE	DESCRIPTION
411405	REFRIG TEE R410A 1/4"
411406	REFRIG TEE R410A 5/16"
411410	REFRIG TEE R410A 3/8"
411415	REFRIG TEE R410A 1/2"
411420	REFRIG TEE R410A 5/8"
411425	REFRIG TEE R410A 3/4"
409627	REFRIG TEE R410A 7/8"
2702284	REFRIG TEE R410A 1 1/8"
2702285	REFRIG TEE R410A 1 1/4"
411435	REFRIG TEE 1"
411440	REFRIG TEE 1 1/8"
411441	REFRIG TEE 1 1/4"
411445	REFRIG TEE 1 3/8"
411446	REFRIG TEE 1 1/2"
411450	REFRIG TEE 1 5/8"
411451	REFRIG TEE 2"
411452	REFRIG TEE 2 1/8"
411453	REFRIG TEE 2 5/8"
409620	REFRIG RED TEE R410A 3/8 X 3/8 X 1/4"
409621	REFRIG RED TEE R410A 1/2 X 1/2 X 1/4"
409622	REFRIG RED TEE R410A 1/2 X 1/2 X 3/8"
411464	REFRIG RED TEE R410A 5/8 X 5/8 X 3/8"
409623	REFRIG RED TEE R410A 5/8 X 5/8 X 1/2"
411466	REFRIG RED TEE R410A 3/4 X 3/4 X 3/8"
409626	REFRIG RED TEE R410A 7/8 X 7/8 X 1/2"

COPPER COUPLINGS (FEMALE/FEMALE)



REECE CODE	DESCRIPTION
411500	REFRIG COUPLING R410A 1/4"
411505	REFRIG COUPLING R410A 3/8"
411510	REFRIG COUPLING R410A 1/2"
411515	REFRIG COUPLING R410A 5/8"
411520	REFRIG COUPLING R410A 3/4"
411525	REFRIG COUPLING R410A 7/8"
409612	REFRIG COUPLING R410A 1"
411535	REFRIG COUPLING R410A 1 1/8"
2702296	REFRIG COUPLING R410A 1 1/4"
411540	REFRIG COUPLING R410A 1 3/8"
411545	REFRIG COUPLING R410A 1 5/8"
411530	REFRIG COUPLING 1"
409613	REFRIG COUPLING 1 1/8"
411536	REFRIG COUPLING 1 1/4"
409614	REFRIG COUPLING 1 3/8"
411541	REFRIG COUPLING 1 1/2"
409615	REFRIG COUPLING 1 5/8"
411546	REFRIG COUPLING 2"
411550	REFRIG COUPLING 2 1/8"
411555	REFRIG COUPLING 2 5/8"
411605	REFRIG RED COUPLING R410A 3/8" X 1/4"
2701242	REFRIG RED COUPLING R410A 1/2" X 1/4"
411610	REFRIG RED COUPLING R410A 1/2" X 3/8"
411612	REFRIG RED COUPLING R410A 5/8" X 3/8"
411615	REFRIG RED COUPLING R410A 5/8" X 1/2"
409605	REFRIG RED COUPLING R410A 3/4" X 3/8"
409606	REFRIG RED COUPLING R410A 3/4" X 1/2"
409607	REFRIG RED COUPLING R410A 3/4" X 5/8"
409608	REFRIG RED COUPLING R410A 7/8" X 1/2"
409609	REFRIG RED COUPLING R410A 7/8" X 5/8"
409610	REFRIG RED COUPLING R410A 7/8" X 3/4"
409611	REFRIG RED COUPLING R410A 1" X 3/4"
411644	REFRIG RED COUPLING R410A 1" X 7/8"
2702292	REFRIG RED COUPLING R410A 1 1/8" X 5/8"
2702293	REFRIG RED COUPLING R410A 1 1/8" X 3/4"
2702294	REFRIG RED COUPLING R410A 1 1/8" X 7/8"
2702297	REFRIG RED COUPLING R410A 1 3/8" X 1 1/8"
2702299	REFRIG RED COUPLING R410A 1 5/8" X 1 3/8"
411645	REFRIG RED COUPLING 1 1/8" X 1/2"
411650	REFRIG RED COUPLING 1 1/8" X 5/8"
411655	REFRIG RED COUPLING 1 1/8" X 3/4"
411660	REFRIG RED COUPLING 1 1/8" X 7/8"
411661	REFRIG RED COUPLING 1 1/8" X 1"
411665	REFRIG RED COUPLING 1 3/8" X 7/8"
411670	REFRIG RED COUPLING 1 3/8" X 1 1/8"
411672	REFRIG RED COUPLING 1 5/8" X 7/8"
411675	REFRIG RED COUPLING 1 5/8" X 1 1/8"
411680	REFRIG RED COUPLING 1 5/8" X 1 3/8"
411684	REFRIG RED COUPLING 2 1/8" X 1 1/8"
411685	REFRIG RED COUPLING 2 1/8" X 1 3/8"
411690	REFRIG RED COUPLING 2 1/8" X 1 5/8"
411692	REFRIG RED COUPLING 2 5/8" X 1 1/8"
411693	REFRIG RED COUPLING 2 5/8" X 1 3/8"
411694	REFRIG RED COUPLING 2 5/8" X 1 5/8"
411695	REFRIG RED COUPLING 2 5/8" X 2 1/8"

COPPER BUSHES (MALE/FEMALE)



REECE CODE	DESCRIPTION
411749	REFRIG RED BUSH R410A 3/8" X 1/4"
411750	REFRIG RED BUSH R410A 1/2" X 1/4"
411755	REFRIG RED BUSH R410A 1/2" X 3/8"
411756	REFRIG RED BUSH R410A 5/8" X 3/8"
411760	REFRIG RED BUSH R410A 5/8" X 1/2"
411770	REFRIG RED BUSH R410A 3/4" X 5/8"
411780	REFRIG RED BUSH R410A 7/8" X 5/8"
2702286	REFRIG RED BUSH R410A 1 1/8" X 5/8"
2702288	REFRIG RED BUSH R410A 1 1/8" X 7/8"
2702289	REFRIG RED BUSH R410A 1 1/4" X 1"
2702290	REFRIG RED BUSH R410A 1 3/8" X 7/8"
2702291	REFRIG RED BUSH R410A 1 5/8" X 1 3/8"
411786	REFRIG RED BUSH 1 1/8" X 1/2"
411790	REFRIG RED BUSH 1 1/8" X 5/8"
411795	REFRIG RED BUSH 1 1/8" X 3/4"
411800	REFRIG RED BUSH 1 1/8" X 7/8"
2701449	REFRIG RED BUSH 1 1/4" X 1/2"
2701240	REFRIG RED BUSH 1 1/4" X 3/4"
2701241	REFRIG RED BUSH 1 1/4" X 1"
411805	REFRIG RED BUSH 1 3/8" X 7/8"
411810	REFRIG RED BUSH 1 3/8" X 1 1/8"
411812	REFRIG RED BUSH 1 5/8" X 7/8"
411815	REFRIG RED BUSH 1 5/8" X 1 1/8"
411820	REFRIG RED BUSH 1 5/8" X 1 3/8"
411825	REFRIG RED BUSH 2 1/8" X 1 1/8"
411835	REFRIG RED BUSH 2 1/8" X 1 5/8"
2700148	REFRIG RED BUSH 2 5/8" X 1 5/8"
411838	REFRIG RED BUSH 2 5/8" X 2 1/8"

COPPER P-TRAPS



REECE CODE	DESCRIPTION
409628	REFRIG COPPER P TRAP R410A 5/8"
411851	REFRIG COPPER P TRAP R410A 3/4"
409629	REFRIG COPPER P TRAP R410A 7/8"
411853	REFRIG COPPER P TRAP 1 1/8"
411854	REFRIG COPPER P TRAP 1 3/8"
411855	REFRIG COPPER P TRAP 1 5/8"
411856	REFRIG COPPER P TRAP 2 1/8"

COPPER BONNETS



REECE CODE	DESCRIPTION
2701245	REFRIG COPPER FLARE BONNET R410A 1/4"
2701246	REFRIG COPPER FLARE BONNET R410A 3/8"
2701906	REFRIG COPPER FLARE BONNET R410A 1/2"
2701247	REFRIG COPPER FLARE BONNET R410A 5/8"
2701907	REFRIG COPPER FLARE BONNET R410A 3/4"

COPPER FLARE WASHER



REECE CODE	DESCRIPTION
2701249	REFRIG COPPER FLARE WASHER 3/8"
2701248	REFRIG COPPER FLARE WASHER 1/4"
2701250	REFRIG COPPER FLARE WASHER 1/2"
2701251	REFRIG COPPER FLARE WASHER 5/8"
2701252	REFRIG COPPER FLARE WASHER 3/4"

COPPER PIPE CLIP




REECE CODE	DESCRIPTION
2701253	COPPER PIPE CLIP 1/4"
2701254	COPPER PIPE CLIP 3/8"
2701255	COPPER PIPE CLIP 1/2"
2701256	COPPER PIPE CLIP 5/8"
2701257	COPPER PIPE CLIP 3/4"
2701258	COPPER PIPE CLIP 7/8"
2701259	COPPER PIPE CLIP 1"
2701260	COPPER PIPE CLIP 1 1/8"
2701261	COPPER PIPE CLIP 1 1/4"
2701262	COPPER PIPE CLIP 1 3/8"
2701263	COPPER PIPE CLIP 1 1/2"
2701264	COPPER PIPE CLIP 1 5/8"
2701265	COPPER PIPE CLIP 1 3/4"
2701266	COPPER PIPE CLIP 2"
2701267	COPPER PIPE CLIP 2 1/8"
2701268	COPPER PIPE CLIP 2 1/2"

COPPER END CAPS (STOP ENDS)




REECE CODE	DESCRIPTION
704480	REFRIG COPPER CAP R410A 3/8"
704485	REFRIG COPPER CAP R410A 1/2"
704490	REFRIG COPPER CAP R410A 3/4"
409725	REFRIG COPPER CAP R410A 7/8"
704495	REFRIG COPPER CAP R410A 1"
409735	REFRIG COPPER CAP 1 1/8"
409745	REFRIG COPPER CAP 1 3/8"
409755	REFRIG COPPER CAP 1 5/8"
409765	REFRIG COPPER CAP 2 1/8"
409780	REFRIG COPPER CAP 2 5/8"

COPPER Y PIECES




REECE CODE	DESCRIPTION
411701	REFRIG Y PIECE R410A 1/2 X 3/8 X 3/8"
411702	REFRIG Y PIECE R410A 5/8 X 1/2 X 1/2"
411704	REFRIG Y PIECE R410A 3/4 X 5/8 X 5/8"
411705	REFRIG Y PIECE R410A 7/8 X 5/8 X 5/8"
411706	REFRIG Y PIECE R410A 7/8 X 7/8 X 7/8"
411708	REFRIG Y PIECE 1 X 3/4 X 3/4"
411711	REFRIG Y PIECE 1 1/8 X 7/8 X 7/8"

COPPER ELBOWS 180° (FEMALE/FEMALE)



REECE CODE	DESCRIPTION
411366	REFRIG ELBOW 180 F & F 1/2"
411367	REFRIG ELBOW 180 F & F 5/8"
411368	REFRIG ELBOW 180 F & F 3/4"
411370	REFRIG ELBOW 180 F & F 1"

BRASS FLARE NUTS



REECE CODE	DESCRIPTION
2701503	SHORT BARREL FLARE NUT 1/4"
2701569	SHORT BARREL FLARE NUT 5/16"
2701504	SHORT BARREL FLARE NUT 3/8"
2701506	SHORT BARREL FLARE NUT 1/2"
2701508	SHORT BARREL FLARE NUT 5/8"
2701510	SHORT BARREL FLARE NUT 3/4"
2701505	SHORT BARREL FLARE R410A NUT 3/8"
2701507	SHORT BARREL FLARE R410A NUT 1/2"
2701509	SHORT BARREL FLARE R410A NUT 5/8"
2701511	SHORT BARREL FLARE R410A NUT 3/4"
2701566	SHORT BARREL FLARE NUT 5/16" X 1/4" R410A
2701512	FROST PROOF FLARE NUT 1/4"
2701514	FROST PROOF FLARE NUT 3/8"
2701515	FROST PROOF FLARE NUT 1/2"
2701516	FROST PROOF FLARE NUT 5/8"
2701517	FROST PROOF FLARE NUT 3/4"
2701513	F/PROOF REDUCING FLARE NUT 3/8" X 1/4"
2701497	LONG FLARE NUT 3/8"
2701501	LONG FLARE NUT 5/8"
2701502	LONG FLARE NUT 3/4"
2701498	LONG REDUCING FLARE NUT 1/2" X 3/8"
2701500	LONG REDUCING FLARE NUT 5/8" X 1/2"

BRASS UNIONS



REECE CODE	DESCRIPTION
2701283	DOUBLE FLARE UNION 1/4"
2701570	DOUBLE FLARE UNION 5/16"
2701285	DOUBLE FLARE UNION 3/8"
2701288	DOUBLE FLARE UNION 1/2"
2701290	DOUBLE FLARE UNION 5/8"
2701291	DOUBLE FLARE UNION 3/4"
2701284	DOUBLE FLARE RED UNION 3/8" X 1/4"
2701286	DOUBLE FLARE RED UNION 1/2" X 1/4"
2701287	DOUBLE FLARE RED UNION 1/2" X 3/8"
2701289	DOUBLE FLARE RED UNION 5/8" X 1/2"
2701293	1/4" MFL X 1/8" MBSP UNION
2701294	1/4" MFL X 1/4" MBSP UNION
2701295	1/4" MFL X 3/8" MBSP UNION
2701296	1/4" MFL X 1/2" MBSP UNION
2701297	3/8" MFL X 1/4" MBSP UNION
2701298	3/8" MFL X 3/8" MBSP UNION
2701299	3/8" MFL X 1/2" MBSP UNION
2701300	1/2" MFL X 1/2" MBSP UNION
2701301	1/2" MFL X 3/4" MBSP UNION
2701302	5/8" MFL X 1/2" MBSP UNION
2701303	5/8" MFL X 3/4" MBSP UNION
2701304	3/4" MFL X 1/2" MBSP UNION
2701305	3/4" MFL X 3/4" MBSP UNION
2701306	1/4" MFL X 3/8" FFL UNION
2701307	3/8" MFL X 1/4" FFL UNION
2701308	3/8" MFL X 1/2" FFL UNION
2701309	1/2" MFL X 3/8" FFL UNION
2701310	5/8" MFL X 1/2" FFL UNION
2701311	1/4" MFL X 1/8" FBSP UNION
2701312	1/4" MFL X 1/4" FBSP UNION
2701313	1/4" MFL X 3/8" FBSP UNION
2701314	3/8" MFL X 1/2" FBSP UNION
2701315	1/2" MFL X 1/2" FBSP UNION
2701335	1/4" MBSP X 1/8" FBSP UNION
2701336	3/8" MBSP X 1/4" FBSP UNION
2701337	1/2" MBSP X 1/4" FBSP UNION
2701338	1/2" MBSP X 3/8" FBSP UNION
2701339	3/4" MBSP X 1/2" FBSP UNION
2701898	5/16" MSAE SCHR X 1/4" FSAE UNION (R410A)
2702350	1/4" MSAE SCHR X 5/16" FSAE UNION (R410A)
2701237	1/4" MFL X 5/16" FFL UNION (R410A)
2702351	5/16" MFL X 1/4" FFL UNION (R410A)
2701384	1/2" M.ACME X 1/4" FFL ADAPTOR
2701385	1/2" F.ACME X 1/4" MFL ADAPTOR
2702365	1/4" MFL X 1/4" MNPT UNION
2701571	1/8" FNPT X 1/4" MFL UNION

BRASS SOLDER UNIONS



REECE CODE	DESCRIPTION
2701316	1/4" MFL X 1/4" SOLDER UNION
2701317	3/8" MFL X 3/8" SOLDER UNION
2701318	1/2" MFL X 1/2" SOLDER UNION
2701319	5/8" MFL X 5/8" SOLDER UNION
2701340	1/4" MBSP X 1/4" SOLDER UNION
2701341	3/8" MBSP X 3/8" SOLDER UNION
2701343	1/2" MBSP X 1/2" SOLDER UNION

BRASS SWIVEL UNIONS



REECE CODE	DESCRIPTION
2701546	MFL SWIVEL UNION 1/4"
2701547	MFL SWIVEL UNION 3/8"
2701548	MFL SWIVEL UNION 1/2"
2701549	MFL SWIVEL UNION 5/8"
2701550	MFL SWIVEL UNION 3/4"

BRASS TEES



REECE CODE	DESCRIPTION
2701490	1/4" MFL TEE
2701492	1/4" MFL X 1/8" MBSP TEE
2701493	1/4" MFL X 1/4" MBSP TEE
2701494	1/4" MFL X 1/4" FFL TEE

BRASS ELBOWS



REECE CODE	DESCRIPTION
2702352	1/4" MFL X 1/4" MFL ELBOW
2702353	3/8" MFL X 3/8" MFL ELBOW
2702354	1/2" MFL X 1/2" MFL ELBOW
2702355	5/8" MFL X 5/8" MFL ELBOW

BRASS CAPS



REECE CODE	DESCRIPTION
2701538	FLARE SEAL CAP 1/4"
2701539	FLARE SEAL CAP 3/8"
2701540	FLARE SEAL CAP 1/2"
2701541	FLARE SEAL CAP 5/8"

BRASS PLUGS



REECE CODE	DESCRIPTION
2701542	MBSP HEX PIPE PLUG 1/8"
2701543	MBSP HEX PIPE PLUG 1/4"
2701544	MBSP HEX PIPE PLUG 3/8"
2701545	MBSP HEX PIPE PLUG 1/2"

CYLINDER ADAPTORS



REECE CODE	DESCRIPTION
2701292	FLARE CYLINDER ADAPTER 1/4"
2701499	FLARE CYLINDER ADAPTER - R410A 5/16"
2701329	ACME CYLINDER ADAPTER
2700109	CYLINDER ADAPTOR 3/8 MSAE X 3/4 FBSP
2701577	CYLINDER ADAPTOR WASHER
2701575	BRASS REFRIGERANT CYLINDER CAP 3/4"

LIQUID LINE FILTER DRIERS



REECE CODE	DESCRIPTION
2701671	FL 032 FILTER DRIER 1/4"
2701387	FL 033 FILTER DRIER 3/8"
2701452	FL 052 FILTER DRIER 1/4"
2701389	FL 053 FILTER DRIER 3/8"
2701390	FL 082 FILTER DRIER 1/4"
2701673	FL 083 FILTER DRIER 3/8"
2701392	FL 084 FILTER DRIER 1/2"
2701393	FL 162 FILTER DRIER 1/4"
2701394	FL 163 FILTER DRIER 3/8"
2701396	FL 165 FILTER DRIER 5/8"
2701397	FL 303 FILTER DRIER 3/8"
2701398	FL 304 FILTER DRIER 1/2"
2701672	FL 305 FILTER DRIER 5/8"
2701400	FL 306 FILTER DRIER 3/4"
2701762	SOL 032S FILTER DRIER 1/4"
2701763	SOL 033S FILTER DRIER 3/8"
2701764	SOL 052S FILTER DRIER 1/4"
2701765	SOL 053S FILTER DRIER 3/8"
2701766	SOL 082S FILTER DRIER 1/4"
2701767	SOL 083S FILTER DRIER 3/8"
2701768	SOL 084S FILTER DRIER 1/2"
2701769	SOL 162S FILTER DRIER 1/4"
2701770	SOL 163S FILTER DRIER 3/8"
2701771	SOL 164S FILTER DRIER 1/2"
2701772	SOL 165S FILTER DRIER 5/8"
2701773	SOL 303S FILTER DRIER 3/8"
2701774	SOL 304S FILTER DRIER 1/2"
2701775	SOL 305S FILTER DRIER 5/8"
2701776	SOL 306S FILTER DRIER 3/4"
2701777	SOL 307S FILTER DRIER 7/8"
2701782	SOL 417S FILTER DRIER 7/8"

BI-FLOW HEAT PUMP DRIERS

	REECE CODE	DESCRIPTION
	2701567	BI-FLOW DRIER 082 1/4" FL
	2701456	BI-FLOW DRIER 083 3/8" FL
	2701458	BI-FLOW DRIER 084 1/2" FL
	2701235	BI FLOW DRIER 163 3/8" FL
	2701234	BI FLOW DRIER 164 1/2" FL
	2701460	BI-FLOW DRIER 165 5/8" FL
	2701568	BI-FLOW DRIER 082S 1/4" SOL
	2701457	BI-FLOW DRIER 083S 3/8" SOL
	2701459	BI-FLOW DRIER 084S 1/2" SOL
	2701910	BI-FLOW DRIER 163S 3/8" SOL
2701911	BI-FLOW DRIER 164S 1/2" SOL	
2701461	BI-FLOW DRIER 165S 5/8" SOL	

DEMOUNTABLE DRIER SHELLS

	REECE CODE	DESCRIPTION
	2701415	CORE DEMOUNTABLE SHELL DRIER 7/8" X 1
	2701416	CORE DEMOUNTABLE SHELL DRIER 7/8" X 2
	2701417	CORE DEMOUNTABLE SHELL DRIER 1 1/8" X 1
	2701418	CORE DEMOUNTABLE SHELL DRIER 1 1/8" X 2
	2701172	CORE DEMOUNTABLE SHELL DRIER 1 1/8" X 3
	2701419	CORE DEMOUNTABLE SHELL DRIER 1 3/8" X 1
	2701421	CORE DEMOUNTABLE SHELL DRIER 1 5/8" X 1
	2701422	CORE DEMOUNTABLE SHELL DRIER 1 5/8" X 2
	2701423	CORE DEMOUNTABLE SHELL DRIER 2 1/8" X 2
	2701424	CORE DEMOUNTABLE SHELL DRIER 2 1/8" X 3

DEMOUNTABLE DRIER CORES

	REECE CODE	DESCRIPTION
	2701233	STANDARD CORE FILTER DRIER
	2701462	ULTRA DRY HELDON DRIER CORE
	2701463	BURNOUT HELDON DRIER CORE
	2702363	HELDON FELT FILTER ELEMENT
	2702362	HELDON SUCTION FILTER CORE
	2701180	DEMOUNTABLE DRIER SHELL BRACKET

DOMESTIC FILTER DRIER

	REECE CODE	DESCRIPTION
	2700087	DOMESTIC DRIER CAPILLARY 10GR 1/4"
	2700088	DOMESTIC DRIER CAPILLARY 15GR 1/4"
	2702375	DOMESTIC DRIER CAPILLARY 20GR 1/4"
	2700104	DOMESTIC DRIER W/TAILS 15GR 1/4"

SUCTION BURN-OUT DRIERS

REECE CODE	DESCRIPTION
2701426	SUCTION BURNOUT DRIER 082 1/4"FL
2701427	SUCTION BURNOUT DRIER 083 3/8"FL
2701429	SUCTION BURNOUT DRIER 163 3/8"FL
2701430	SUCTION BURNOUT DRIER 164 1/2"FL
2701431	SUCTION BURNOUT DRIER 165 5/8"FL
2701432	SUCTION BURNOUT DRIER 304 1/2"FL
2701433	SUCTION BURNOUT DRIER 305 5/8"FL
2701434	SUCTION BURNOUT DRIER 306 3/4"FL
2701454	SUCTION BURNOUT DRIER W/TUBE 1/2"FL
2701453	SUCTION BURNOUT DRIER W/TUBE 3/8"FL
2701455	SUCTION BURNOUT DRIER W/TUBE 5/8"FL
2701437	SUCTION BURNOUT DRIER 083S 3/8"SOL
2701438	SUCTION BURNOUT DRIER 084S 1/2"SOL
2701439	SUCTION BURNOUT DRIER 163S 3/8"SOL
2701440	SUCTION BURNOUT DRIER 164S 1/2"SOL
2701441	SUCTION BURNOUT DRIER 165S 5/8"SOL
2701443	SUCTION BURNOUT DRIER 305S 5/8"SOL
2701444	SUCTION BURNOUT DRIER 306S 3/4"SOL
2701445	SUCTION BURNOUT DRIER 307S 7/8"SOL
2701446	SUCTION BURNOUT DRIER 309S 1 1/8"SOL
2701551	SUCTION PANCAKE DRIER 404S 1/2"SOL
2701552	SUCTION PANCAKE DRIER 405S 5/8"SOL
2701553	SUCTION PANCAKE DRIER 406S 3/4"SOL
2701554	SUCTION PANCAKE DRIER 407S 7/8"SOL
2701555	SUCTION PANCAKE DRIER 409S 1 1/8"SOL

SIGHT GLASSES

REECE CODE	DESCRIPTION
2701525	MFL HELDON SIGHT GLASS 1/4"
2701526	MFL HELDON SIGHT GLASS 3/8"
2701527	MFL HELDON SIGHT GLASS 1/2"
2701528	MFL HELDON SIGHT GLASS 5/8"
2701529	MFL X FFL HELDON SIGHT GLASS 1/4"
2701530	MFL X FFL HELDON SIGHT GLASS 3/8"
2701531	MFL X FFL HELDON SIGHT GLASS 1/2"
2701533	HELDON SIGHT GLASS SOL. W/TAILS 1/4"
2701534	HELDON SIGHT GLASS SOL. W/TAILS 3/8"
2701535	HELDON SIGHT GLASS SOL. W/TAILS 1/2"
2701536	HELDON SIGHT GLASS SOL. W/TAILS 5/8"
2701537	HELDON SIGHT GLASS SOL. W/TAILS 3/4"
2701899	HELDON SIGHT GLASS SOL. W/TAILS 7/8"
2701900	HELDON SIGHT GLASS SOL. W/TAILS 1 1/8"
2701901	HELDON SIGHT GLASS SOL. W/TAILS 1 3/8"
2701902	HELDON SIGHT GLASS SOL. W/TAILS 1 5/8"
2701903	HELDON SIGHT GLASS SOL. W/TAILS 2 1/8"

CRANKCASE PRESSURE REGULATOR

REECE CODE	DESCRIPTION
2700473	CRANKCASE PRESSURE REGULATOR 1/2"
2700474	CRANKCASE PRESSURE REGULATOR 5/8"
2700448	CRANKCASE PRESSURE REGULATOR 7/8"
2700449	CRANKCASE PRESSURE REGULATOR 1 1/8"

OIL SEPERATORS (INTERNAL FLOAT)



REECE CODE	DESCRIPTION
2701471	OIL SEPERATOR 1/2" SOLDER
2701472	OIL SEPERATOR 5/8" SOLDER
2701473	OIL SEPERATOR 7/8" SOLDER
2701474	OIL SEPERATOR 1 1/8" SOLDER
2701475	OIL SEPERATOR 1 3/8" SOLDER

SUCTION ACCUMULATORS



REECE CODE	DESCRIPTION
2701464	HELDON SUCTION ACCUMULATOR 1/2"
2701465	HELDON SUCTION ACCUMULATOR 5/8"
2701466	HELDON SUCTION ACCUMULATOR 3/4"
2701467	HELDON SUCTION ACCUMULATOR 7/8"
2701468	HELDON SUCTION ACCUMULATOR 1 1/8"
2701469	HELDON SUCTION ACCUMULATOR 1 3/8"
2701470	HELDON SUCTION ACCUMULATOR 1 5/8"

LIQUID RECEIVERS



REECE CODE	DESCRIPTION
2701476	HELDON LIQUID RECEIVER 1.4 LITRE
2701477	HELDON LIQUID RECEIVER 2.4 LITRE
2701478	HELDON LIQUID RECEIVER 4.4 LITRE
2701480	HELDON LIQUID RECEIVER 8.2 LITRE
2701479	HELDON LIQUID RECEIVER 10.9 LITRE

VIBRATION ELIMINATORS



REECE CODE	DESCRIPTION
2701275	1/2" VIBRATION ELIMINATOR
2701276	5/8" VIBRATION ELIMINATOR
2701277	3/4" VIBRATION ELIMINATOR
2701278	7/8" VIBRATION ELIMINATOR
2701279	1 1/8" VIBRATION ELIMINATOR
2701280	1 3/8" VIBRATION ELIMINATOR
2701281	1 5/8" VIBRATION ELIMINATOR
2701282	2 1/8" VIBRATION ELIMINATOR
2701904	2 5/8" VIBRATION ELIMINATOR

SOLENOID VALVE & COILS



REECE CODE	DESCRIPTION
2703970	HELDON SOLENOID VALVE - MSAE 1/4"
2703971	HELDON SOLENOID VALVE - MSAE 3/8"
2703972	HELDON SOLENOID VALVE - MSAE 1/2"
2703973	HELDON SOLENOID VALVE - MSAE 5/8"
2703974	HELDON SOLENOID VALVE - ID 1/4"
2703975	HELDON SOLENOID VALVE - ID 3/8"
2703976	HELDON SOLENOID VALVE - ID 1/2"
2703977	HELDON SOLENOID VALVE - ID 5/8"
2703978	HELDON SOLENOID VALVE - ID 3/4"
2703979	HELDON SOLENOID VALVE - ID 7/8"
2703980	HELDON SOLENOID VALVE - ID 1 1/8"
2701370	HELDON SOLENOID VALVE SOL 1 1/8"
2701371	HELDON SOLENOID VALVE SOL 1 5/8"
2703981	HELDON SOLENOID COIL - 240V AC
2705360	HELDON SOLENOID COIL- 12V DC

PACKED CAP (ANGLE) VALVES



REECE CODE	DESCRIPTION
2701345	1/4" FL X 1/4" MBSP ANGLE VALVE
2701346	1/4" FL X 3/8" MBSP ANGLE VALVE
2701347	3/8" FL X 1/4" MBSP ANGLE VALVE
2701348	3/8" FL X 3/8" MBSP ANGLE VALVE

LINE VALVES



REECE CODE	DESCRIPTION
2701325	1/4" FLARE BLUE LINE VALVE
2701326	3/8" FLARE BLUE LINE VALVE
2701327	1/2" FLARE BLUE LINE VALVE
2701328	5/8" FLARE BLUE LINE VALVE
2701320	1/4" 2 WAY FLARE LINE VALVE
2701321	3/8" 2 WAY FLARE LINE VALVE
2701322	1/2" 2 WAY FLARE LINE VALVE
2701323	5/8" 2 WAY FLARE LINE VALVE
2701330	1/4" SOLDER LINE VALVE W/TAILS
2701331	3/8" SOLDER LINE VALVE W/TAILS
2701332	1/2" SOLDER LINE VALVE W/TAILS
2701333	5/8" SOLDER LINE VALVE W/TAILS

BALL VALVES



REECE CODE	DESCRIPTION
2701351	REFRIG BALL VALVE 3/8"
2701352	REFRIG BALL VALVE 1/2"
2701353	REFRIG BALL VALVE 5/8"
2701354	REFRIG BALL VALVE 3/4"
2701355	REFRIG BALL VALVE 7/8"
2701356	REFRIG BALL VALVE 1 1/8"
2701357	REFRIG BALL VALVE 1 3/8"
2701358	REFRIG BALL VALVE 1 5/8"
2701359	REFRIG BALL VALVE 2 1/8"
2701556	REFRIG BALL VALVE W/ACCESS PORT 3/8"
2701557	REFRIG BALL VALVE W/ACCESS PORT 1/2"
2701558	REFRIG BALL VALVE W/ACCESS PORT 5/8"
2701559	REFRIG BALL VALVE W/ACCESS PORT 3/4"
2701560	REFRIG BALL VALVE W/ACCESS PORT 7/8"
2701561	REFRIG BALL VALVE W/ACCESS PORT 1 1/8"
2701562	REFRIG BALL VALVE W/ACCESS PORT 1 3/8"
2701563	REFRIG BALL VALVE W/ACCESS PORT 1 5/8"
2701564	REFRIG BALL VALVE W/ACCESS PORT 2 1/8"
2701565	REFRIG BALL VALVE W/ACCESS PORT 2 5/8"

HENRY 3 IN 1 BALL VALVE (BALL VALVE, SIGHT GLASS AND MOISTURE INDICATOR)



REECE CODE	CONNECTION SIZE (INCH)	LENGTH (MM)	WEIGHT (KG)
2705221	3/8	185	0.42
2705222	1/2	185	0.42
2705223	5/8	185	0.42
2705224	3/4	211	0.8
2705225	7/8	211	0.8
2705226	1 1/8	237	1.2

Suitable for HFC and HCFC refrigerants and R744 along with their associated oils
 Operating temperature = -40°C to +120°C. Max. working pressure = 4,800 kPa

WATER REGULATING VALVES



REECE CODE	DESCRIPTION
2701161	V46AA-9600 PENN 3/8" WATER REG VALVE
2701162	V46AB-9600 PENN 1/2" WATER REG VALVE
2701163	V46AC-9600 PENN 3/4" WATER REG VALVE
2701164	V46AD-9600 PENN 1" WATER REG VALVE
2701165	V46AE-9600 PENN 1 1/4" WATER REG VALVE
2701143	F61MB-1 PENN WATERPROOF FLOW SWITCH

ACCESS (SCHRADER) VALVES



REECE CODE	DESCRIPTION
2701523	SCHRADER VALVE W/TAIL 1/4"FL
2701524	SCHRADER VALVE W/TAIL R410A 5/16"FL
2701519	SCHRADER VALVE CORE R410A
2701520	SCHRADER FLARE QUICK SEAL CAP 1/4"
2701521	SCHRADER FLARE QUICK SEAL CAP R410A 5/16"
2701496	SCHRADER CAP WITH TOOL
2701232	SCHRADER SWIVEL TEE 1/4" SCHR X 1/4" FSAE
2705373	SCHRADER SWIVEL TEE 5/16" SCHR X 1/4" FSAE
2704930	SCHRADER TEE 1/4" SCHR X 1/4" FSAE
2701573	SCHRADER UNION 1/4" SCHR X 1/8" MBSP
2702146	BULLET PIERCING VALVE 1/4" 5/16" 3/8"

REVERSING VALVES



REECE CODE	DESCRIPTION	CAPACITY (kW)	DISCHARGE	SUCTION
2700135	V2-408064 RANCO REVERSE VALVE	8.8	3/8"	1/2"
2700136	V3-410084 RANCO REVERSE VALVE	9.5	1/2"	5/8"
2700137	V6-312084 RANCO REVERSE VALVE	17.6	1/2"	3/4"
2700138	V6-414084 RANCO REVERSE VALVE	17.6	1/2"	7/8"
2700139	V10-414084 RANCO REVERSE VALVE	29.9	1/2"	7/8"
2700140	V10-414124 RANCO REVERSE VALVE	29.9	3/4"	7/8"
2700141	V10-418144 RANCO REVERSE VALVE	29.9	7/8"	1 1/8"
2700142	V12-4220T4 RANCO REVERSING VALVE	45.4	1 1/8"	1 3/8"
2701383	HELDON REVERSING VALVE (ALL)	7	3/8"	1/2"
2701377	HELDON REVERSING VALVE (R22)	11	1/2"	5/8"
2701379	HELDON REVERSING VALVE (ALL)	20	1/2"	7/8"
2701380	HELDON REVERSING VALVE (ALL)	35	3/4"	7/8"
2700133	L30 RANCO REVERSE VALVE COIL 240VAC SUITS ALL RANCO V2 - V12 SERIES VALVES			
2701382	240VAC HELDON REVERSING VALVE COIL SUITS ALL HELDON VALVES			

ROTALOCK VALVES



REECE CODE	DESCRIPTION
2702698	ROTALOCK VALVE 3/8"ID X 1"R/L
2702696	ROTALOCK VALVE 1/2"ID X 1"R/L
2702358	ROTALOCK VALVE 5/8" ID X 1"R/L
2702699	ROTALOCK VALVE 5/8"ID X 1 1/4"R/L
2702697	ROTALOCK VALVE 3/4"ID X 1 1/4"R/L
2702695	ROTALOCK VALVE 7/8"ID X 1/4"R/L
2701229	ROTALOCK VALVE 1 1/8 X 1 1/4
2701230	ROTALOCK VALVE 1 1/8 X 1 3/4
2701231	ROTALOCK VALVE 1 3/8 X 1 3/4
2700593	ROTALOCK WELDING SPUD SUIT 1" R/L NUT
2700594	ROTALOK WELDING SPUD SUIT 1 1/4" R/L NUT

DANFOSS TX VALVES (FLARE)

REECE CODE	MODEL	PART NO.	REFRIG	EQUALISED	CAPILLARY TUBE (M)	CONNECTION INLET X OUTLET
2701118	TN2	068Z3346	R134A	INT	1.5	3/8" X 1/2"
2701119	TX2	068Z3206	R22	INT	1.5	3/8" X 1/2"
2701120	TS2	068Z3400	R404A	INT	1.5	3/8" X 1/2"
2701121	TEN2	068Z3348	R134A	EXT	1.5	3/8" X 1/2"
2701122	TEX2	068Z3209	R22	EXT	1.5	3/8" X 1/2"
2701123	TES2	068Z3403	R404A	EXT	1.5	3/8" X 1/2"

DANFOSS TX VALVES (SOLDER)

REECE CODE	MODEL	PART NO.	REFRIG	EQUALISED	CAPILLARY TUBE (M)	CONNECTION INLET (FLARE) X OUTLET (SOLDER)
2701132	TX2S	068Z3281	R22	INT	1.5	3/8" X 1/2"
2701133	TN2S	068Z3383	R134A	INT	1.5	3/8" X 1/2"
2701134	TS2S	068Z3414	R404A	INT	1.5	3/8" X 1/2"
2701135	TEX2S	068Z3284	R22	EXT	1.5	3/8" X 1/2"
2701136	TEN2S	068Z3385	R134A	EXT	1.5	3/8" X 1/2"
2701137	TES2S	068Z3415	R404A	EXT	1.5	3/8" X 1/2"

DANFOSS T2 TX VALVE ORIFICE WITH FILTER

REECE CODE	ORIFICE NO.	PART NO.	RATED CAPACITY IN (kw)			
			R22	R407C	R134A	R404A (R507)
2701124	#0X	068-2002	0.50	0.50	0.40	0.38
2701125	#00	068-2003	1.0	1.1	0.90	0.70
2701126	#01	068-2010	2.5	2.7	1.8	1.6
2701127	#02	068-2015	3.5	3.8	2.6	2.1
2701128	#03	068-2006	5.2	5.6	4.6	4.2
2701129	#04	068-2007	8	8.6	6.7	6
2701130	#05	068-2008	10.5	11.3	8.6	7.7
2701131	#06	068-2009	15.5	16.7	10.5	9.1

Range N: -40 to +10°C