



WOLFEN™

PRODUCT SPECIFICATION GUIDE

CONTENTS

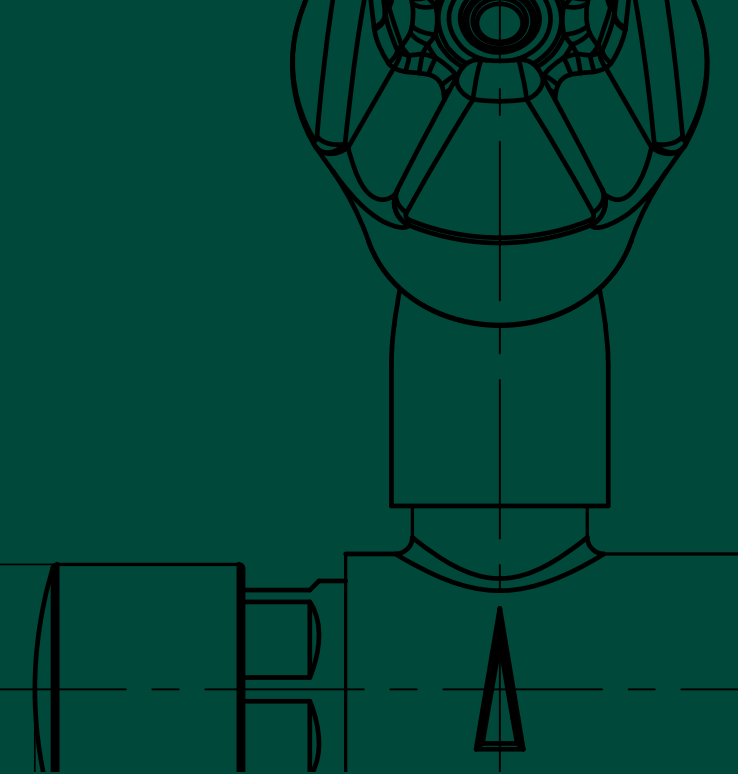
Intro	04
SECTION 1.0 TAPWARE	05
1.1 BUBBLERS	
Wolfen 122° Wall Bubbler	06
Wolfen 90° Wall Bubbler	08
Wolfen Hob Bubbler	10
Wolfen Remote Button Bubbler	12
1.2 FOOT AND KNEE OPERATED TAPWARE	
Wolfen Foot Operated Pedal Valve	14
Wolfen Foot Operated Kit with Outlet	16
Wolfen Knee Operated Valve	18
Wolfen Knee Operated Kit with Outlet	20
1.3 FOOD PREPARATION TAPWARE	
Wolfen Pre Rinse Sink Mixer with Pot Filler	22
Wolfen Compact Pre Rinse Sink Mixer with Pot Filler	24
Wolfen Trigger Spray Assembly with Stop Tap	26
Wolfen Slophopper Assembly with Wall Bracket	28

SECTION 1.0 TAPWARE

1.4	ELECTRONIC TAPWARE	
	Wolfen Sensor Operated Gooseneck Tap	30
	Wolfen Sensor Operated Gooseneck Tap with LED	32
	Wolfen Electronic Foot Pedal Operated Tap	34
1.5	SENSOR TAPWARE	
	Wolfen Wall Mounted Outlet with Plate and Wave-On Sensor	36
	Wolfen Hob Mounted Sensor Tap with Internal Solenoid	38
	SECTION 2.0 HARDWARE	41
	Wolfen Cleaners Sink With Grate	42
	Wolfen Folding Shower Seat 600mm	44
	Wolfen Folding Shower Seat 960mm	44
	Wolfen Slimline Hand Dryer Stainless Steel	46

**Wolfen. The first choice for
performance, precision & reliability.**

Incorporating the very latest technical advances, Wolfen's innovative products deliver new levels of performance and function. Engineered for the most demanding commercial environments, they're guaranteed to perform - all day, every day.



WOLFEN™

SECTION 1.0

TAPWARE

Delivering precise control and ease of use,
Wolfen offers a wide variety of tapware solutions
for the most demanding applications.

Wolfen 122° Wall Bubbler

Product Code: 252418

Wolfen 122° Wall Bubbler with recessed spray nozzle and soft spring button.

Features and Benefits

Infection control features

- Recessed spray nozzle avoids contact with user

Commercial durability

- UV treated rubber guard

Installation and servicing

- Simple allen key run time adjustment
- 0-55 second adjustable
- Supplied with inlet strainer
- Factory pre-set to 4-6 seconds

Usage features

- Soft spring for easy use
- Protective rubber guard for safety

Commercial applications

- Education
- Sports and leisure

Technical Information

Colour	Chrome / rubber guard
--------	-----------------------

Finish	Polished
--------	----------

Material	Brass
----------	-------

Cartridge Type	Press timed flow cartridge
----------------	----------------------------

Min Continuous Working Pressure	150 kPa
---------------------------------	---------

Max Continuous Working Pressure	500 kPa
---------------------------------	---------

Min Continuous Working Temperature	5°C
------------------------------------	-----

Max Continuous Working Temperature	50°C
------------------------------------	------

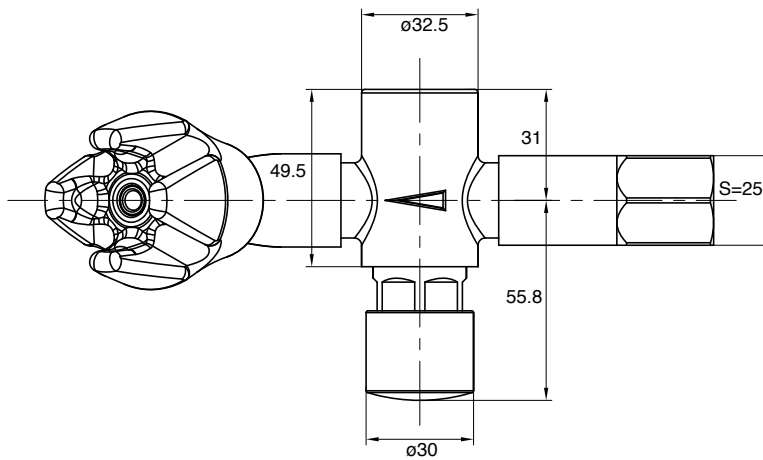
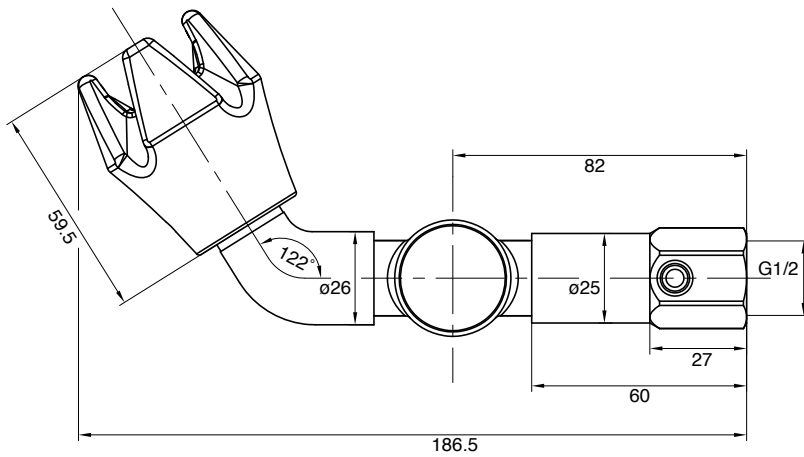
Max Static Pressure	500 kPa
---------------------	---------

Product Warranty	5 years
------------------	---------



WaterMark
AS/NZS 3718
WM74513

Suitable for High Pressure applications
(minimum 150kPa)



Wolfen 90° Wall Bubbler

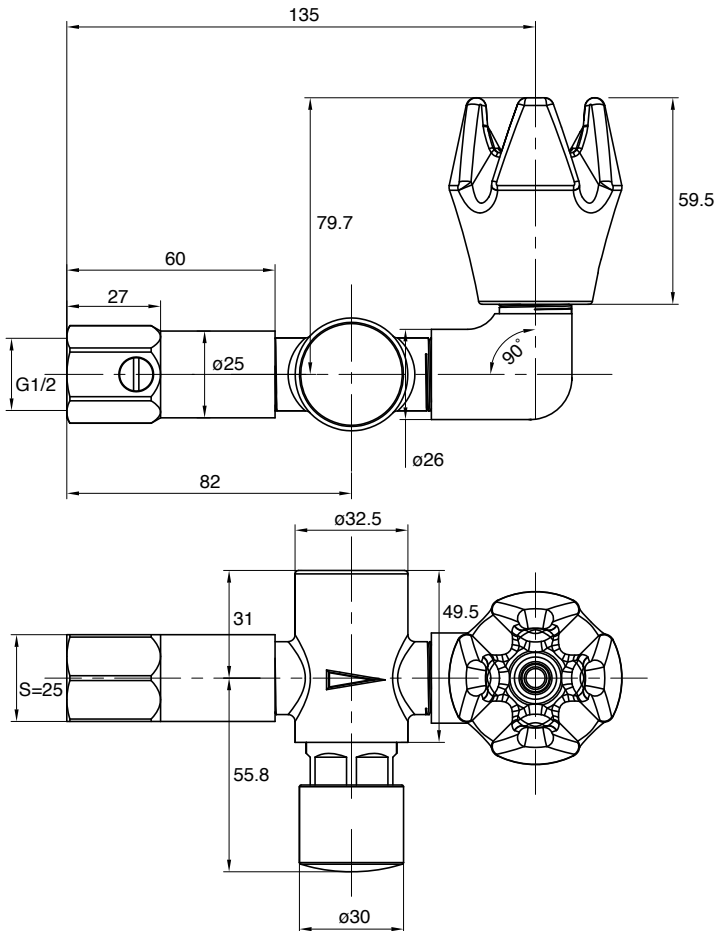
Product Code: 252465

Wolfen 90° Wall Bubbler with recessed spray nozzle and soft spring button.

Features and Benefits	Technical Information												
Infection control features <ul style="list-style-type: none">• Recessed spray nozzle avoids contact with user	<table><tr><td>Colour</td><td>Chrome / rubber guard</td></tr></table>	Colour	Chrome / rubber guard										
Colour	Chrome / rubber guard												
Commercial durability <ul style="list-style-type: none">• UV treated rubber guard	<table><tr><td>Finish</td><td>Polished</td></tr></table>	Finish	Polished										
Finish	Polished												
Installation and servicing <ul style="list-style-type: none">• Simple allen key run time adjustment• 0-55 second adjustable• Supplied with inlet strainer• Factory pre-set to 4-6 seconds	<table><tr><td>Material</td><td>Brass</td></tr></table>	Material	Brass										
Material	Brass												
Usage features <ul style="list-style-type: none">• Soft spring for easy use• Protective rubber guard for safety	<table><tr><td>Cartridge Type</td><td>Press timed flow cartridge</td></tr></table>	Cartridge Type	Press timed flow cartridge										
Cartridge Type	Press timed flow cartridge												
Commercial applications <ul style="list-style-type: none">• Education• Sports and leisure	<table><tr><td>Min Continuous Working Pressure</td><td>150 kPa</td></tr><tr><td>Max Continuous Working Pressure</td><td>500 kPa</td></tr><tr><td>Min Continuous Working Temperature</td><td>5°C</td></tr><tr><td>Max Continuous Working Temperature</td><td>50°C</td></tr><tr><td>Max Static Pressure</td><td>500 kPa</td></tr><tr><td>Product Warranty</td><td>5 years</td></tr></table>	Min Continuous Working Pressure	150 kPa	Max Continuous Working Pressure	500 kPa	Min Continuous Working Temperature	5°C	Max Continuous Working Temperature	50°C	Max Static Pressure	500 kPa	Product Warranty	5 years
Min Continuous Working Pressure	150 kPa												
Max Continuous Working Pressure	500 kPa												
Min Continuous Working Temperature	5°C												
Max Continuous Working Temperature	50°C												
Max Static Pressure	500 kPa												
Product Warranty	5 years												



Suitable for High Pressure applications
(minimum 150kPa)



Wolfen Hob Bubbler

Product Code: 252419

Wolfen Hob Mounted Bubbler with recessed spray nozzle and soft spring button.

Features and Benefits

Infection control features

- Recessed spray nozzle avoids contact with user

Commercial durability

- UV treated rubber guard

Installation and servicing

- Simple allen key run time adjustment
- 0-55 second adjustable
- Supplied with inlet strainer
- Factory pre-set to 4-6 seconds

Usage features

- Soft spring for easy use
- Protective rubber guard for safety

Commercial applications

- Education
- Sports and leisure

Technical Information

Colour	Chrome / rubber guard
--------	-----------------------

Finish	Polished
--------	----------

Material	Brass
----------	-------

Cartridge Type	Press timed flow cartridge
----------------	----------------------------

Min Continuous Working Pressure	150 kPa
---------------------------------	---------

Max Continuous Working Pressure	500 kPa
---------------------------------	---------

Min Continuous Working Temperature	5°C
------------------------------------	-----

Max Continuous Working Temperature	50°C
------------------------------------	------

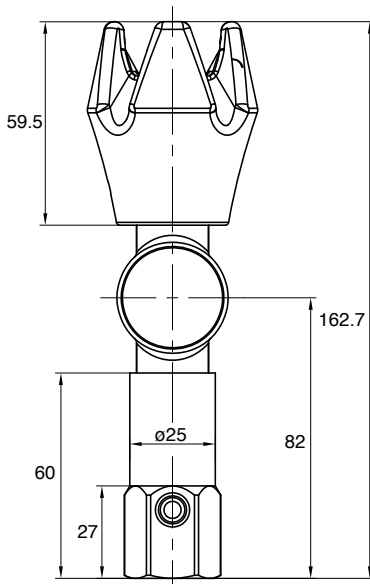
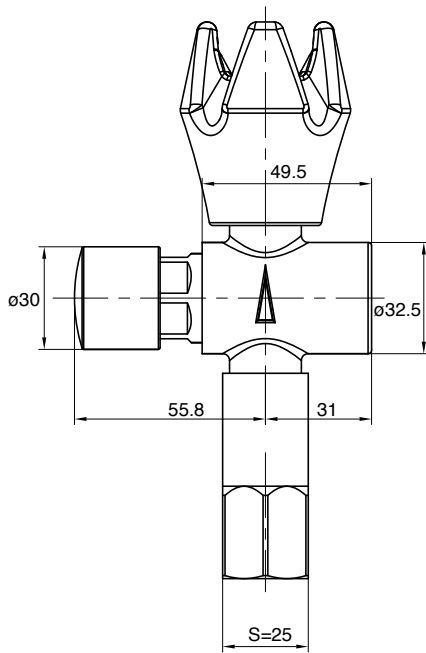
Max Static Pressure	500 kPa
---------------------	---------

Product Warranty	5 years
------------------	---------



WaterMark
AS/NZS 3718
WM74513

Suitable for High Pressure applications
(minimum 150kPa)



Wolfen Remote Button Bubbler

Product Code: 252420

Wolfen bubbler with recessed spray nozzle and a remote soft spring button.

Features and Benefits

Infection control features

- Recessed spray nozzle avoids contact with user

Commercial durability

- UV treated rubber guard

Installation and servicing

- Simple allen key run time adjustment
- 0-55 second adjustable
- Supplied with inlet strainer
- Factory pre-set to 4-6 seconds

Usage features

- Soft spring for easy use
- Protective rubber guard for safety

Commercial applications

- Education
- Sports and leisure

Technical Information

Colour	Chrome / rubber guard
--------	-----------------------

Finish	Polished
--------	----------

Material	Brass
----------	-------

Cartridge Type	Press timed flow cartridge
----------------	----------------------------

Min Continuous Working Pressure	150 kPa
---------------------------------	---------

Max Continuous Working Pressure	500 kPa
---------------------------------	---------

Min Continuous Working Temperature	5°C
------------------------------------	-----

Max Continuous Working Temperature	50°C
------------------------------------	------

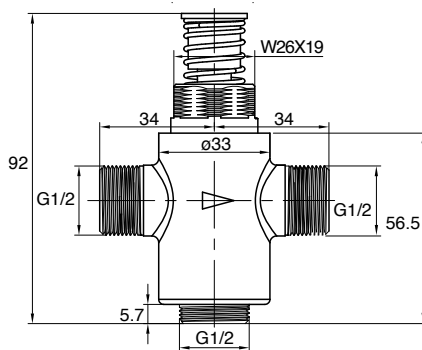
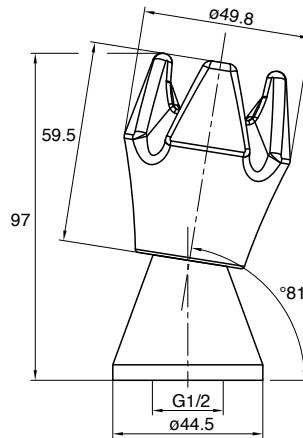
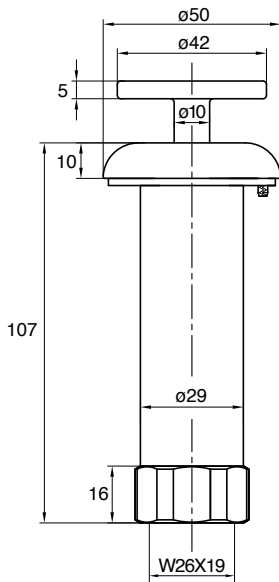
Max Static Pressure	500 kPa
---------------------	---------

Product Warranty	5 years
------------------	---------



WaterMark
AS/NZS 3718
WM74513

Suitable for High Pressure applications
(minimum 150kPa)



Wolfen Foot Operated Pedal Valve

Product Code: 252460

Wolfen timed foot pedal valve for operating tapware.

Features and Benefits

Infection control features

- 15 second timed flow run time complies with food preparation regulations

Installation and servicing

- Wall or floor mount suitable
- Preset to 15 seconds
- Simple allen key run time adjustment

Usage features

- Soft spring for easy use
- 0-55 second adjustable run time
- Foot pedal can be lifted up for ease of cleaning

Commercial applications

- Commercial food premises

Technical Information

Colour	Chrome
Finish	Polished
Material	Brass
Cartridge Type	Timed flow
Min Continuous Working Pressure	150 kPa
Max Continuous Working Pressure	500 kPa
Min Continuous Working Temperature	5°C
Max Continuous Working Temperature	50°C
Max Static Pressure	500 kPa
Product Warranty	5 years



WaterMark

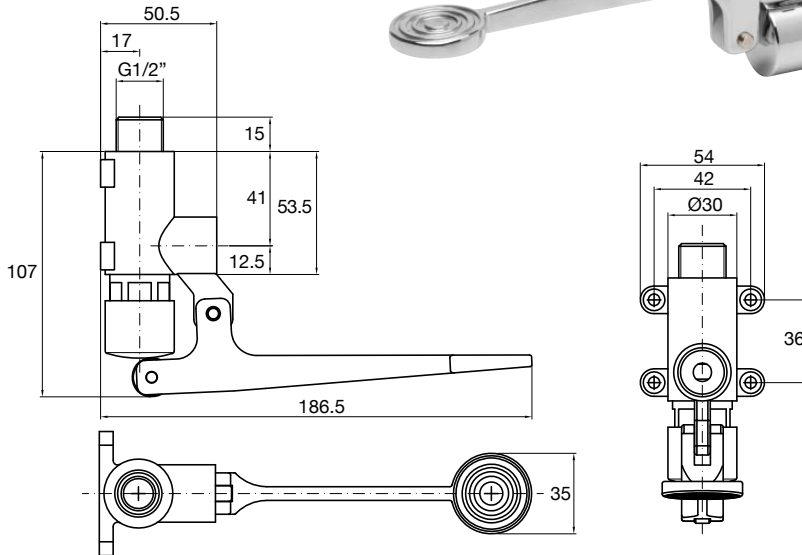
AS/NZS 3718

WM74513

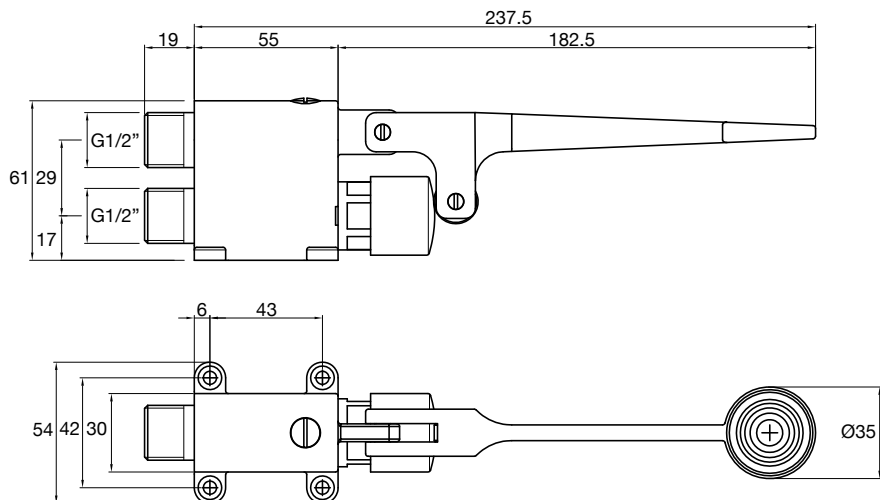
Suitable for High Pressure applications
(minimum 150kPa)



Wall Mounted



Floor Mounted



Wolfen Foot Operated Kit with Outlet

Product Code: 252957

Wolfen foot operating tap including foot pedal valve and tap outlet.

Features and Benefits

Infection control features

- 15 second timed flow run time complies with food preparation regulations

Installation and servicing

- Wall or floor mount suitable
- Preset to 15 seconds
- Simple allen key run time adjustment

Usage features

- Soft spring for easy use
- 0-55 second adjustable run time
- Foot pedal can be lifted up for ease of cleaning

Commercial applications

- Commercial food premises

Technical Information

Colour	Chrome
Finish	Polished
Material	Brass
Cartridge Type	Timed flow
Min Continuous Working Pressure	150 kPa
Max Continuous Working Pressure	500 kPa
Min Continuous Working Temperature	5°C
Max Continuous Working Temperature	50°C
Max Static Pressure	500 kPa
Height	140mm
Clearance	60.8mm
Reach	114mm
Product Warranty	5 years

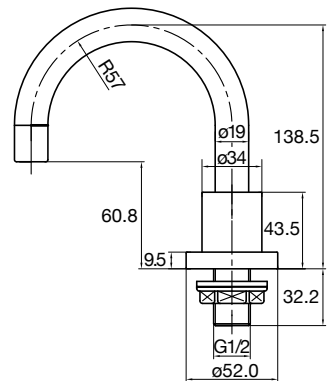
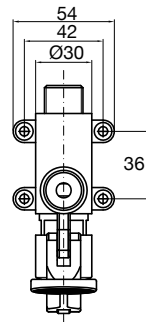
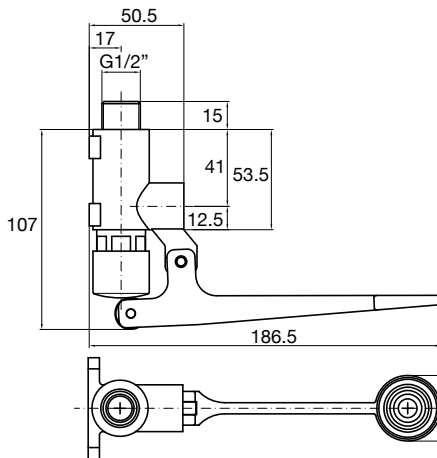


WaterMark
AS/NZS 3718
WM74513

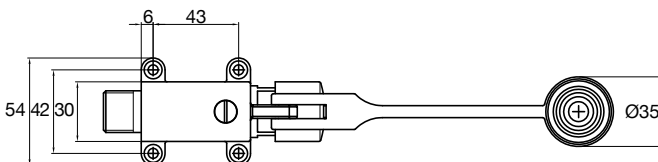
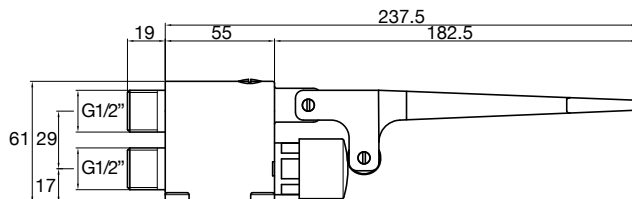
Suitable for High Pressure applications
(minimum 150kPa)



Wall Mounted



Floor Mounted



Wolfen Knee Operated Valve

Product Code: 252958

Wolfen soft spring timed knee valve for operating tapware.

Features and Benefits

Infection control features

- 15 second timed flow run time complies with food preparation regulations

Installation and servicing

- Run time adjustment available

Usage features

- Soft spring for easy use
- 0-55 second adjustable run time available with spare part
- Flexible nylon wand for easy use

Commercial applications

- Commercial food premises

Technical Information

Colour	Chrome
Finish	Polished
Material	Brass
Cartridge Type	Timed flow
Min Continuous Working Pressure	150 kPa
Max Continuous Working Pressure	500 kPa
Min Continuous Working Temperature	5°C
Max Continuous Working Temperature	50°C
Max Static Pressure	500 kPa
Product Warranty	5 years

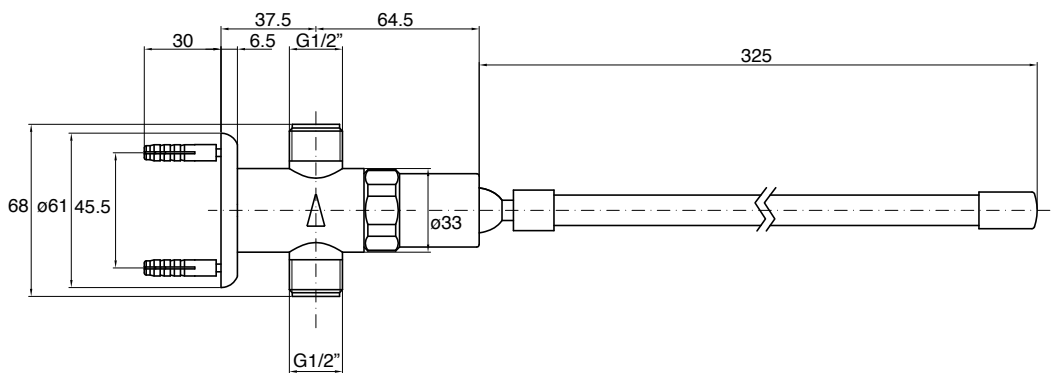


WaterMark

AS/NZS 3718

WM74513

Suitable for High Pressure applications
(minimum 150kPa)



Wolfen Knee Operated Kit with Outlet

Product Code: 252959

Wolfen knee operating tap including knee valve and tap outlet.

Features and Benefits

Infection control features

- 15 second timed flow run time complies with food preparation regulations

Installation and servicing

- Run time adjustment available

Usage features

- Soft spring for easy use
- 0-55 second adjustable run time available with spare part
- Flexible nylon wand for easy use

Commercial applications

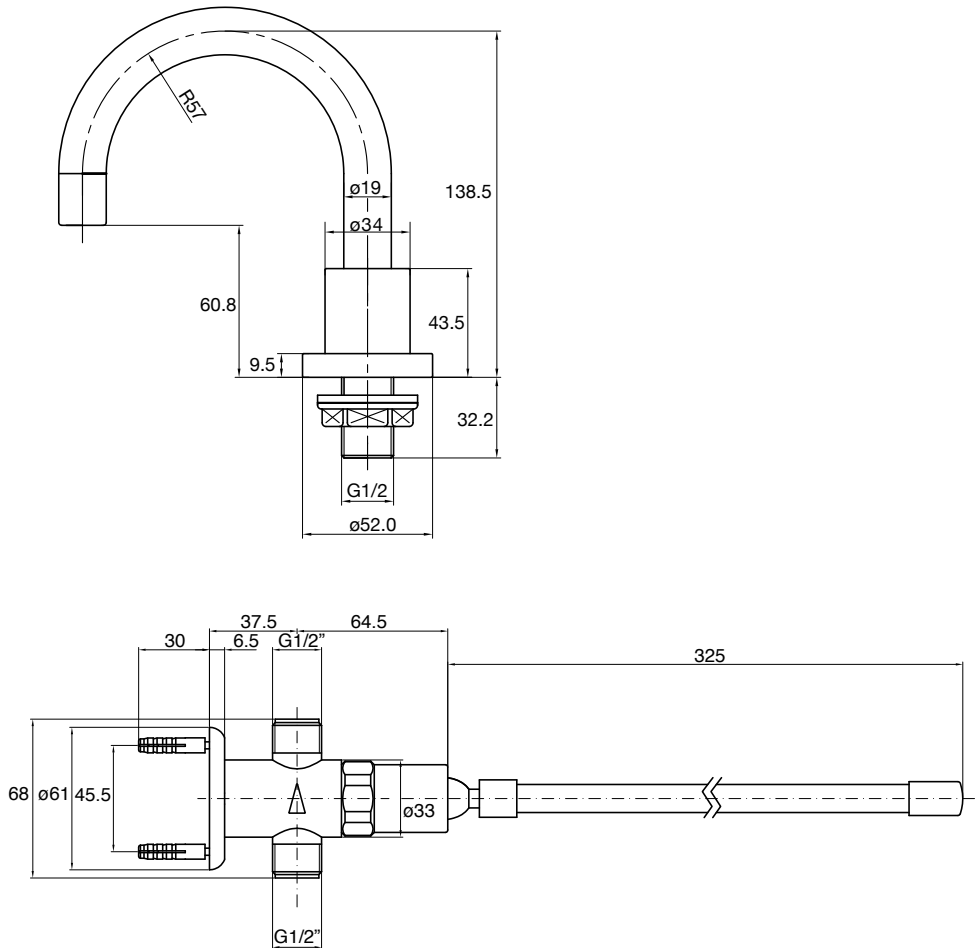
- Commercial food premises

Technical Information

Colour	Chrome
Finish	Polished
Material	Brass
Cartridge Type	Timed flow
Min Continuous Working Pressure	150 kPa
Max Continuous Working Pressure	500 kPa
Min Continuous Working Temperature	5°C
Max Continuous Working Temperature	50°C
Max Static Pressure	500 kPa
Height	140mm
Clearance	60.8mm
Reach	114mm
Product Warranty	5 years



Suitable for High Pressure applications
(minimum 150kPa)



Wolfen Pre Rinse Sink Mixer with Pot Filler

Product Code: 252430

Wolfen Pre Rinse Sink Mixer with pot filler and wall fixing bracket.

Features and Benefits

Infection control features

- Clean line food grade hose
- Minimum crevices for bacteria build up

Commercial durability

- Stainless steel spray nozzle
- Stainless steel braided hose with external lining and PEX inner lining
- Wall fixing bracket for ongoing stability

Installation and servicing

- Cut-down wall bracket with height and projection adjustment
- Built-in non return valve

Usage features

- Trigger spray clip enables effortless continual use
- Easy operation front control pot filler
- Tensioned polished spring for manoeuvrability
- Water efficient spray nozzle
- Trigger handle piece has a built in protective thermal barrier

Anti-vandal features

- Allen key fixing

Commercial applications

- Commercial food premises

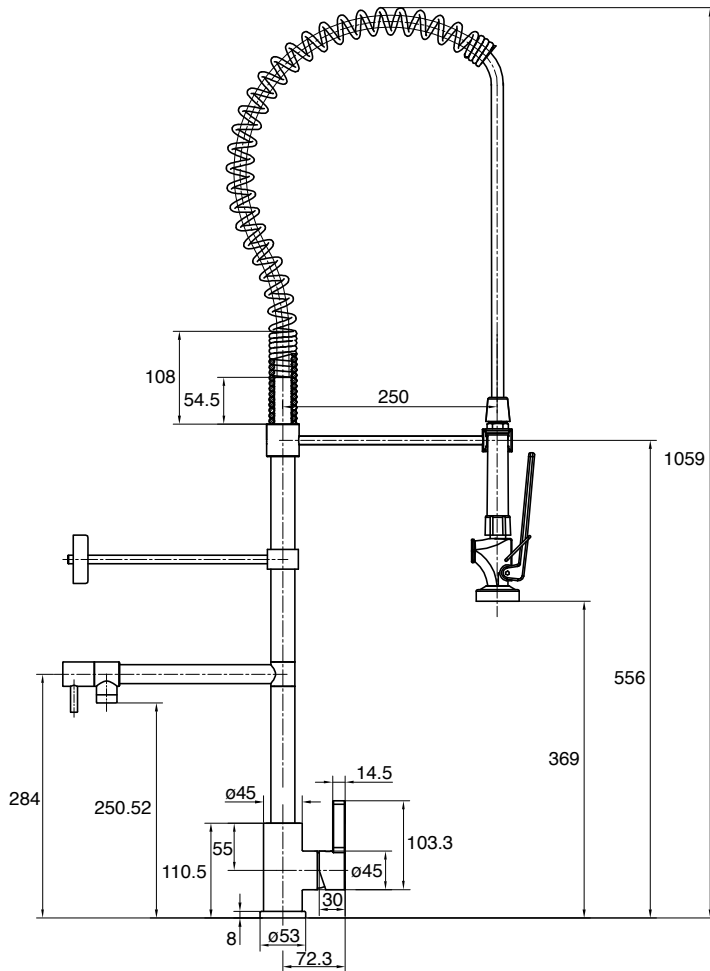
Technical Information

Colour	Chrome
Finish	Polished
Material	Brass
Cartridge Type	Ceramic disc cartridge
Min Continuous Working Pressure	150 kPa
Max Continuous Working Pressure	500 kPa
Min Continuous Working Temperature	5°C
Max Continuous Working Temperature	80°C
Max Static Pressure	500 kPa
Product Warranty	5 years



WaterMark™
AS/NZS 3718
WMKA25617

Suitable for High Pressure applications
(minimum 150kPa)



Wolfen Compact Pre Rinse Sink Mixer with Pot Filler

Product Code: 252452

Wolfen Compact Pre Rinse Sink Mixer with pot filler and wall fixing bracket.

Features and Benefits

Infection control features

- Clean line food grade hose
- Minimum crevices for bacteria build up

Commercial durability

- Stainless steel spray nozzle
- Stainless steel braided hose with external lining and PEX inner lining
- Wall fixing bracket for ongoing stability

Installation and servicing

- Cut-down wall bracket with height and projection adjustment
- Built-in non return valve

Usage features

- Trigger spray clip enables effortless continual use
- Easy operation front control pot filler
- Tensioned polished spring for manoeuvrability
- Water efficient spray nozzle
- Trigger handle piece has a built in protective thermal barrier

Anti-vandal features

- Allen key fixing

Commercial applications

- Commercial food premises

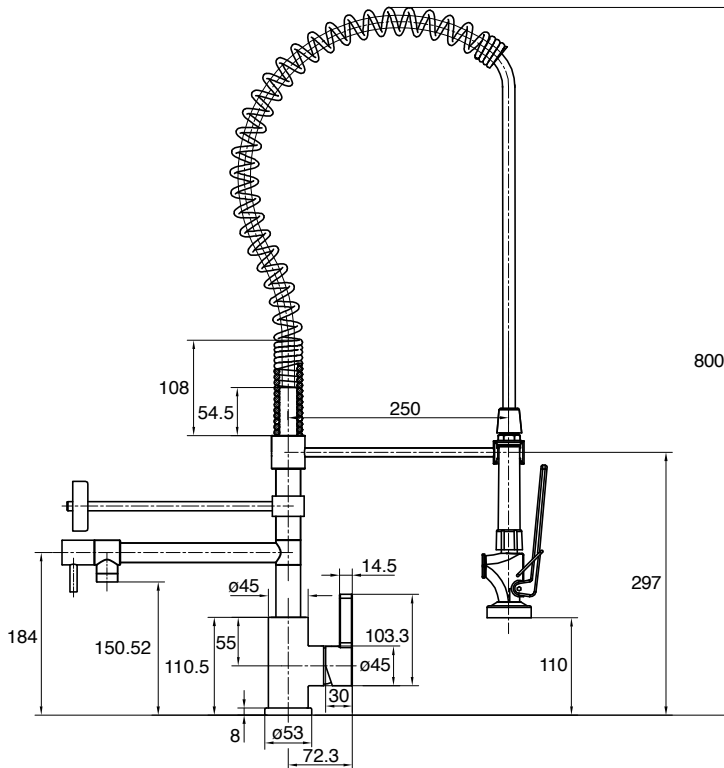
Technical Information

Colour	Chrome
Finish	Polished
Material	Brass
Cartridge Type	Ceramic disc cartridge
Min Continuous Working Pressure	150 kPa
Max Continuous Working Pressure	500 kPa
Min Continuous Working Temperature	5°C
Max Continuous Working Temperature	80°C
Max Static Pressure	500 kPa
Product Warranty	5 years



WaterMark
AS/NZS 3718
WMKA25617

Suitable for High Pressure applications
(minimum 150kPa)



Wolfen Trigger Spray Assembly with Stop Tap

Product Code: 252432

Wolfen Trigger Spray Assembly with stop tap and stainless steel braided hose.

Features and Benefits

Infection control features

- Clean line food grade hose
- Minimum crevices for bacteria build up

Commercial durability

- Stainless steel spray nozzle
- Stainless steel braided hose with external lining and PEX inner lining

Usage features

- Trigger spray clip enables effortless continual use
- Water efficient spray nozzle
- Trigger handle piece has a built in protective thermal barrier

Commercial applications

- Hospital and health care
- Commercial food premises

Technical Information

Colour Chrome

Finish Polished

Material Brass

Cartridge Type Ceramic disc

Min Continuous Working Pressure 150 kPa

Max Continuous Working Pressure 500 kPa

Min Continuous Working Temperature 5°C

Max Continuous Working Temperature 80°C

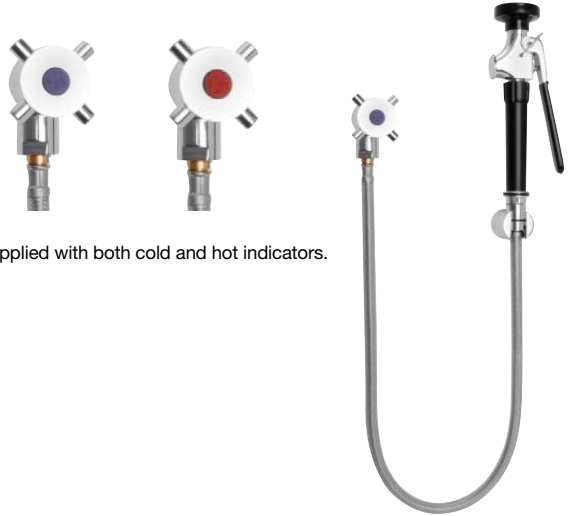
Max Static Pressure 500 kPa

Product Warranty 5 years

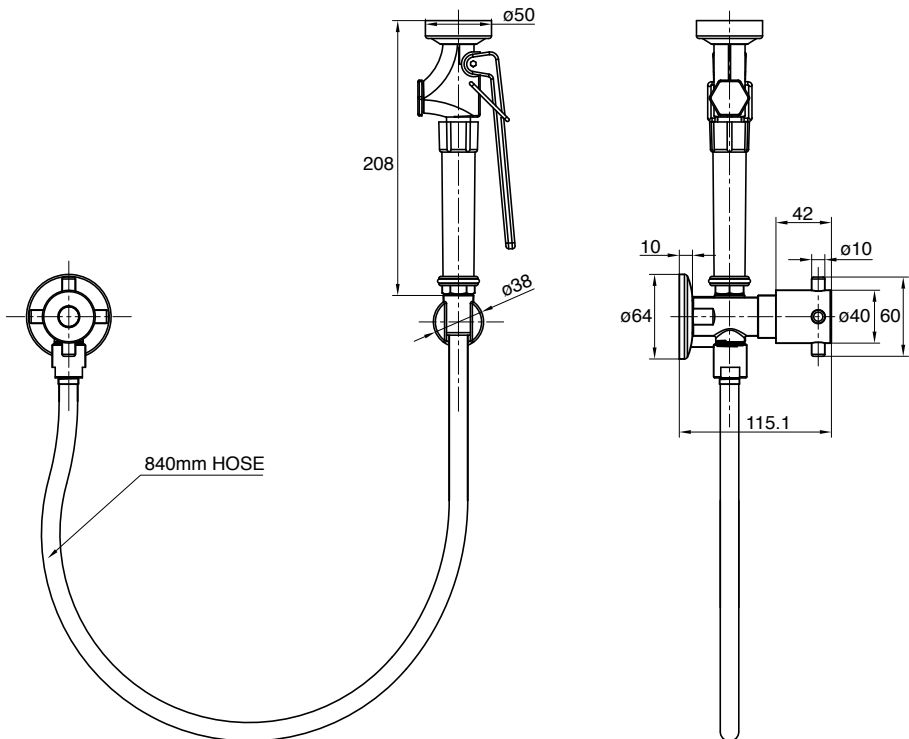


WaterMark
AS/NZS 3718
WMKA25617

Suitable for High Pressure applications
(minimum 150kPa)



Supplied with both cold and hot indicators.



Wolfen Slophopper Assembly with Wall Bracket

Product Code: 252444

Wolfen Trigger Spray Assembly with a stainless steel braided hose.

Features and Benefits

Infection control features

- Clean line food grade hose
- Minimum crevices for bacteria build up

Commercial durability

- Stainless steel spray nozzle
- Stainless steel braided hose with external lining and PEX inner lining

Usage features

- Trigger spray clip enables effortless continual use
- Water efficient spray nozzle
- Trigger handle piece has a built in protective thermal barrier

Commercial applications

- Hospital and health care
- Commercial food premises

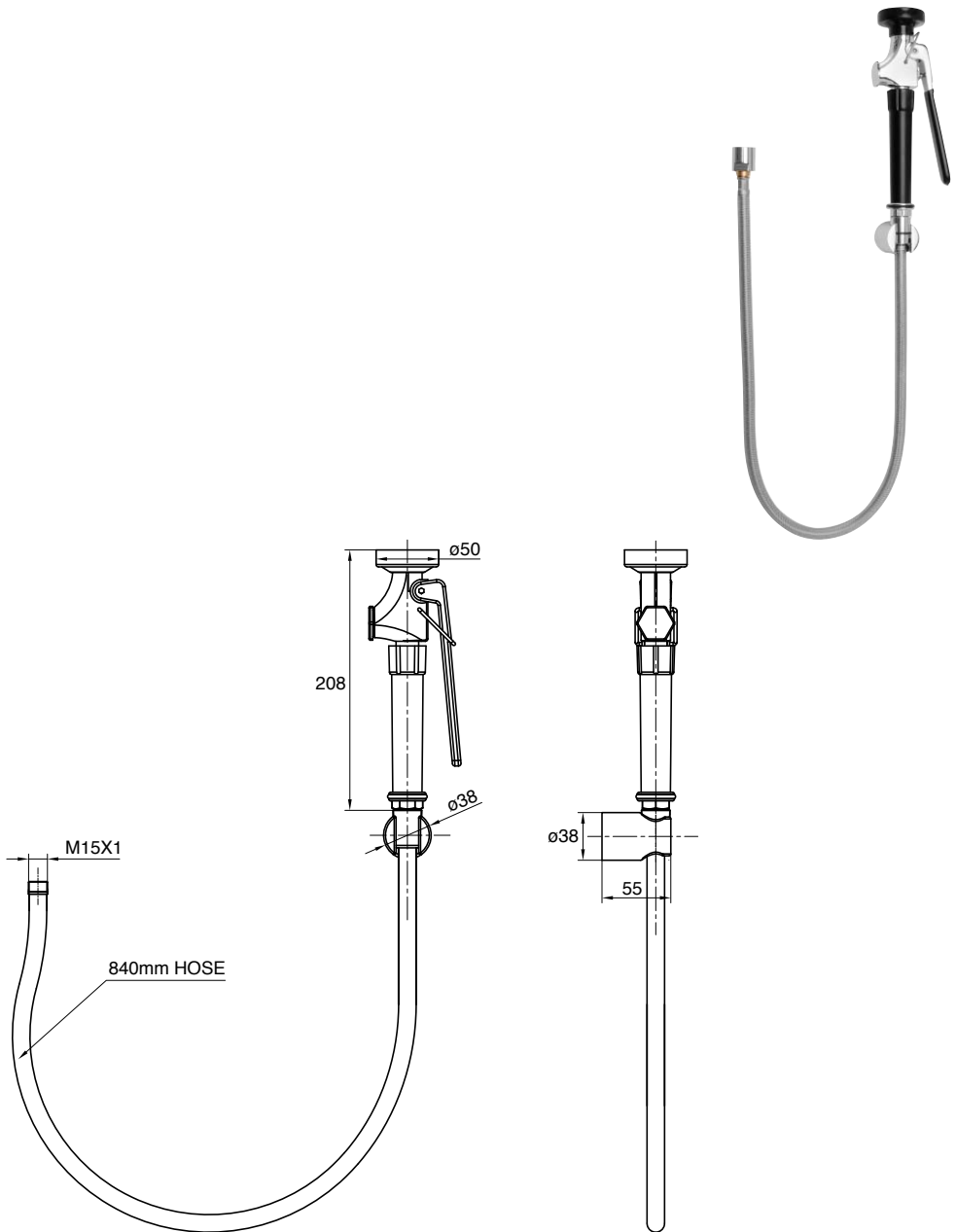
Technical Information

Colour	Chrome
Finish	Polished
Material	Brass
Cartridge Type	Ceramic disc
Min Continuous Working Pressure	150 kPa
Max Continuous Working Pressure	500 kPa
Min Continuous Working Temperature	5°C
Max Continuous Working Temperature	80°C
Max Static Pressure	500 kPa
Product Warranty	5 years



WaterMark
AS/NZS 3718
WMKA25617

Suitable for High Pressure applications
(minimum 150kPa)



Wolfen Sensor Operated Gooseneck Tap

Product Code: 9505568

Wolfen sensor gooseneck tap with sensor range adjustment.

Features and Benefits

Infection control features

- Touch-free operation

Commercial durability

- Waterproof electronics
- Protective shield to prevent cable damage

Installation and servicing

- Fixed 1/2" BSP thread provides a fast and stable installation point
- Integrated dress ring creates a larger mounting platform
- Easy side access sensor range adjustment
- Light indicator on power pack self diagnoses effective power supply to unit

Usage features

- Reflection proof sensor prevents false triggering

Anti-vandal features

- Aerator cannot be easily unscrewed

Commercial applications

- Hospital and health care
- Commercial food premises

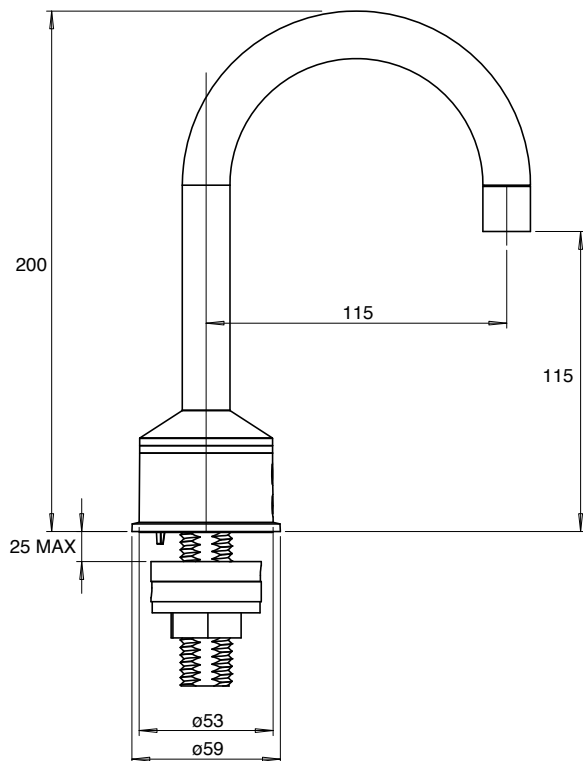
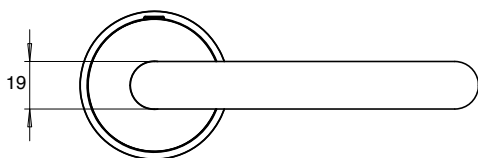
Technical Information

Colour	Chrome
Finish	Polished
Material	Brass
Power Supply	240V AC
Max Continuous Working Pressure	500 kPa
Min Continuous Working Temperature	2°C
Max Continuous Working Temperature	50°C
Max Static Pressure	500 kPa
Height	200mm
Reach	115mm
Product Warranty	5 years



WaterMark
AS/NZS 3718
WM022306

Suitable for High Pressure applications
(minimum 150kPa)



Wolfen Sensor Operated Gooseneck Tap with LED

Product Code: 9506217

Wolfen sensor gooseneck tap with LED light and sensor range adjustment.

Features and Benefits

Infection control features

- Touch-free operation

Commercial durability

- Waterproof electronics
- Protective shield to prevent cable damage

Installation and servicing

- Fixed 1/2" BSP thread provides a fast and stable installation point
- Integrated dress ring creates a larger mounting platform
- Easy side access sensor range adjustment
- Light indicator on power pack self diagnoses effective power supply to unit

Usage features

- Reflection proof sensor prevents false triggering
- Distinctive LED light feature indicates operation

Anti-vandal features

- Aerator cannot be easily unscrewed

Commercial applications

- Hospital and health care
- Commercial food premises

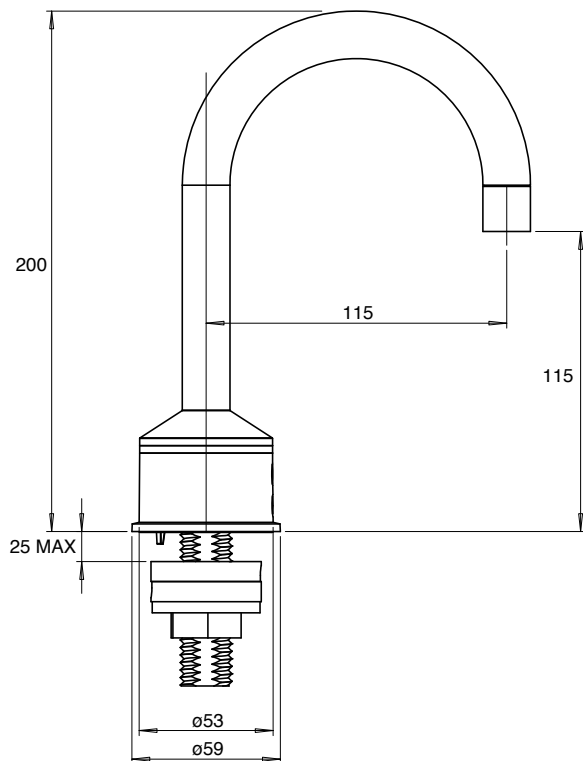
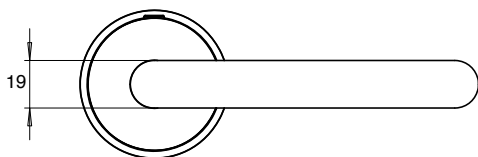
Technical Information

Colour	Chrome
Finish	Polished
Material	Brass
Power Supply	240V AC
Max Continuous Working Pressure	500 kPa
Min Continuous Working Temperature	2°C
Max Continuous Working Temperature	50°C
Max Static Pressure	500 kPa
Height	200mm
Reach	115mm
Product Warranty	5 years



WaterMark
AS/NZS 3718
WM022306

Suitable for High Pressure applications
(minimum 150kPa)



Wolfen Electronic Foot Pedal Operated Tap

Product Code: 9505569

Wolfen foot pedal operated electronic gooseneck tap.

Features and Benefits

Infection control features

- Hands-free operation

Commercial durability

- Heavy duty foot pedal

Installation and servicing

- Wall bracket for solenoid control unit
- Fixed 1/2" BSP thread provides a fast and stable installation point

Usage features

- Touch-on / touch-off operation & timed operation
- LED indicator on control unit indicates when battery is low

Anti-vandal features

- Aerator cannot be easily unscrewed

Commercial applications

- Hospital and health care
- Commercial food premises

Technical Information

Colour Chrome

Finish Polished

Material Brass

Power Supply 6V battery

Max Continuous Working Pressure 500 kPa

Min Continuous Working Temperature 2°C

Max Continuous Working Temperature 50°C

Max Static Pressure 500 kPa

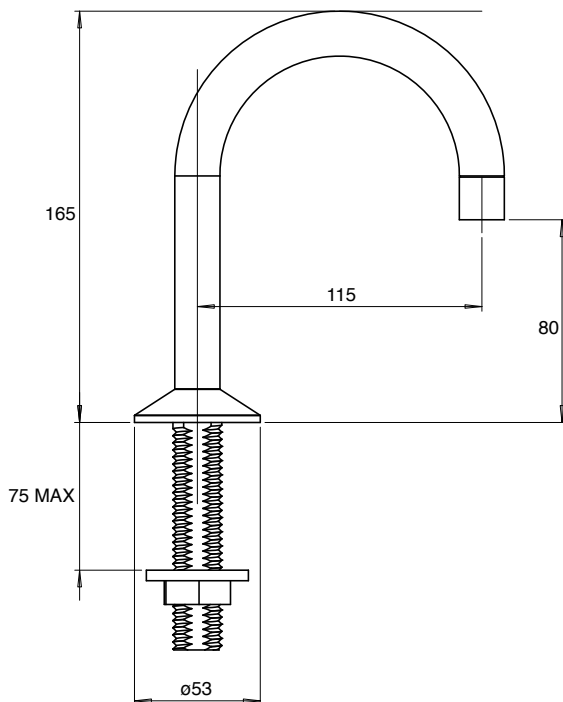
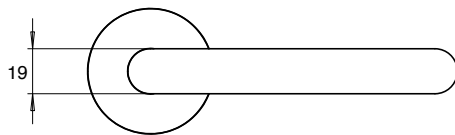
Height 165mm

Reach 115mm

Product Warranty 5 years



Suitable for High Pressure applications
(minimum 150kPa)



Spare Part:

9506218 Electronic Foot
Pedal Power Pack



Wolfen Wall Mounted Outlet with Plate and Wave-On Sensor

Product Code: 9506034

Wolfen wall mounted sensor tap with spout and wall plate.

Features and Benefits

Commercial durability

- 12V mains power via plug-pack power supply
- Low consumption in standby
- Solenoid cartridge has integrated stainless steel strainer
- Water resistant gold-plated cable pluggable connectors
- Brushed 260mm stainless steel spout and cover plate
- Program adjustability via optional remote control
- Auto line flush when unit has not been used for 24hrs

Installation and servicing

- Plug pack transformer with 4.8m cable
- Modular components allow easy maintenance and changeover
- Quick connect moulded electrical plugs
- Plate can be removed without disassembling spout
- Everything except transformer is contained within a pre-assembled in-wall installation box
- Only 70mm wall cavity required
- Integrated maintenance shut-off valve
- Adjustable mounting brackets included

Usage features

- Quick and easy program adjustment via optional remote control
- Features an automated water shut-off function
- Tap can be set up to fill a bath tub
- Aerator with 5L/m flow regulator

Anti-vandal features

- Vandal resistant wall mounted components

Commercial applications

- Hospital and health care
- Commercial food premises

Technical Information

Colour	Stainless Steel
Finish	Brushed
Material	Stainless Steel
Min Continuous Working Pressure	150 kPa
Max Continuous Working Pressure	500 kPa
Maximum Temperature	70° C
Max Static Pressure	800 kPa
Product Warranty	5 years

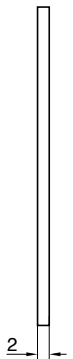
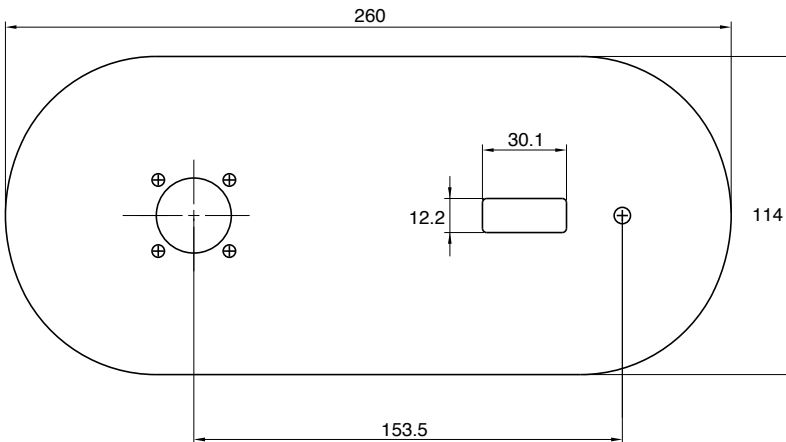
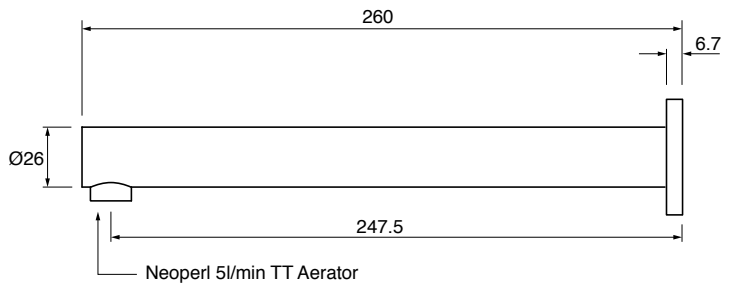
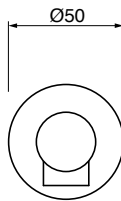
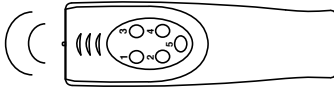


Suitable for High Pressure applications
(minimum 150kPa)



Optional Remote:

9506370 Wolfen Remote Control



Wolfen Hob Mounted Sensor Tap With Internal Solenoid

Product Code: 9506036

Wolfen hob mounted sensor tap with self calibrating infrared sensor and internal solenoid.

Features and Benefits

Commercial durability

- Low power consumption ensuring a long battery life
- Solenoid cartridge has integrated stainless steel strainer
- Water resistant gold-plated cable pluggable connectors
- 6 Star water rating laminar flow

Installation and servicing

- Battery or optional mains powered
- Operates on 4 X AA batteries
- External battery pack for ease of changeover
- Modular components allow easy maintenance and changeover
- Quick connect moulded plugs

Usage features

- Self calibrating infrared electronic sensor
- Tap operates when hand is in sensor range and stops when out of range
- Self adjusting when powered up

Anti-vandal features

- Vandal resistant wall mounted components
- Tap will switch off automatically when used for more than 60 seconds

Commercial applications

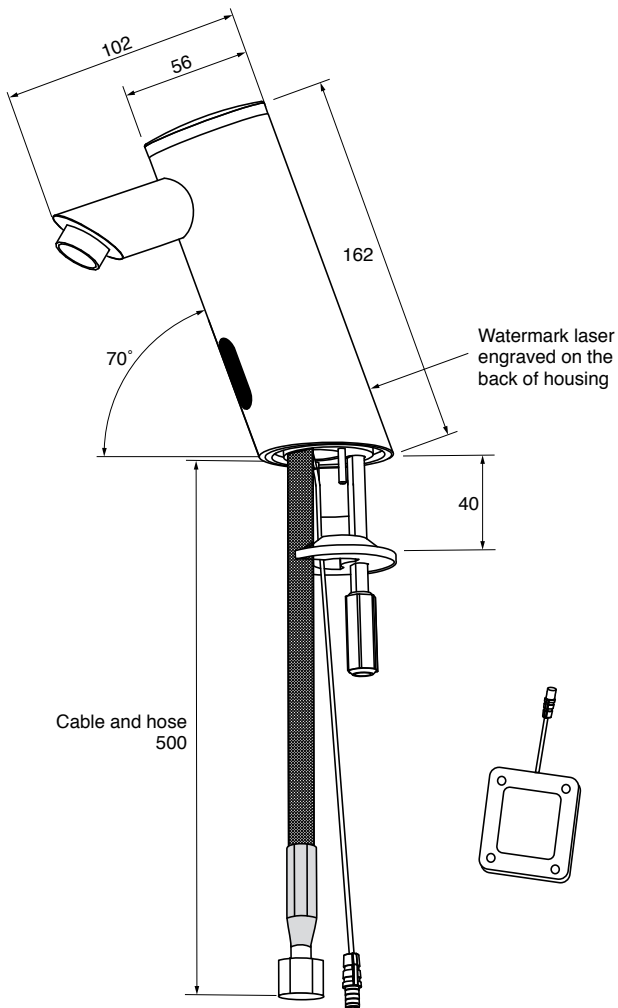
- Public spaces

Technical Information

Colour	Chrome
Finish	Polished
Material	Brass
Min Continuous Working Pressure	150 kPa
Max Continuous Working Pressure	500 kPa
Maximum Temperature	70°C
Max Static Pressure	800 kPa
Product Warranty	5 years

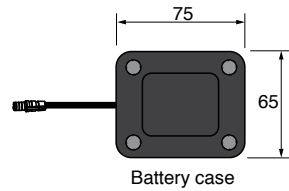


Suitable for High Pressure applications
(minimum 150kPa)



Spare Part:

9506038 Wolfen AC Conversion Unit to 6V



Battery case



WOLFEN™

SECTION 2.0

HARDWARE

Wolfen's hardware offer unmatched durability and reliability
for the most demanding commercial environments.

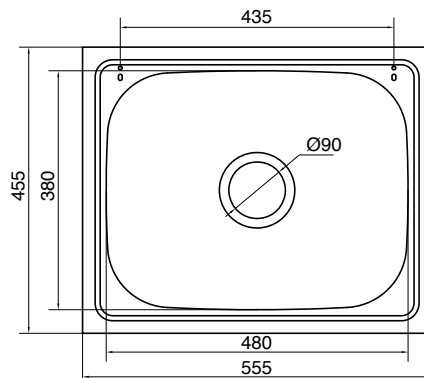
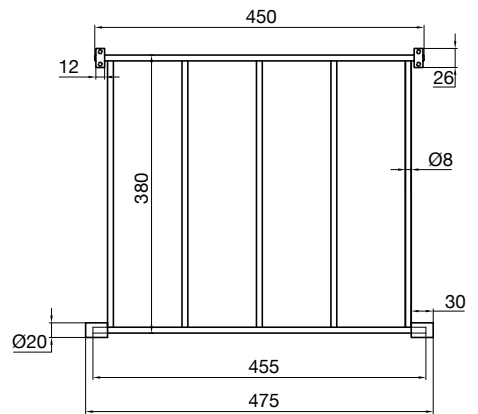
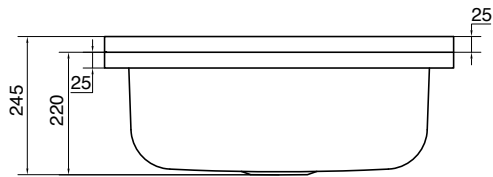
Wolfen Cleaners Sink With Grate

Product Code: 9506688

Wolfen cleaners sink with grate.

Technical Information

Material	316 Marine Grade Stainless Steel
Thickness/Guage	0.8mm
Waste	Suits 90mm Waste
Features	Sound Deadening Pad
Accessories	Includes Heavy-Duty Grate Note: Mounting Brackets Sold Separately 9506689 Wolfen Wall Brackets to suit Cleaners Sink 9506690 Wolfen Floor Brackets to suit Cleaners Sink



Wolfen Folding Shower Seats 600mm / 960mm

Product Code 600mm: 9505996

Product Code 960mm: 9505997

Wolfen folding shower seats with stainless steel legs.

Technical Information

Colour	Stainless Steel Legs White Shower Seat
Finish	Brushed Legs
Material	304 Grade Stainless Steel UV stabilised HDPE Shower Seat 316 Grade Stainless Steel Coach Screws
Maximum Load Rating	472kg

Features and Benefits

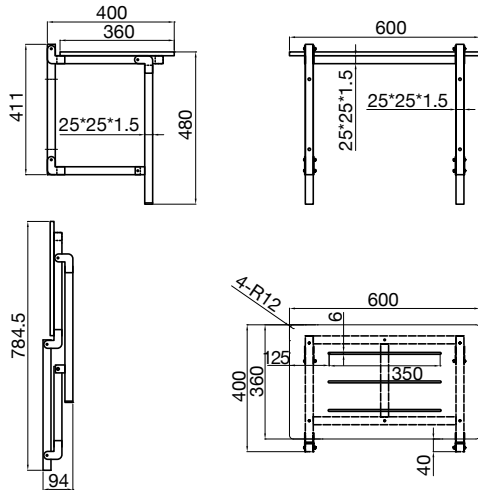
Installation and servicing

- The 960mm model is suitable to create an AS1428.1 compliant bathroom for people with disabilities.



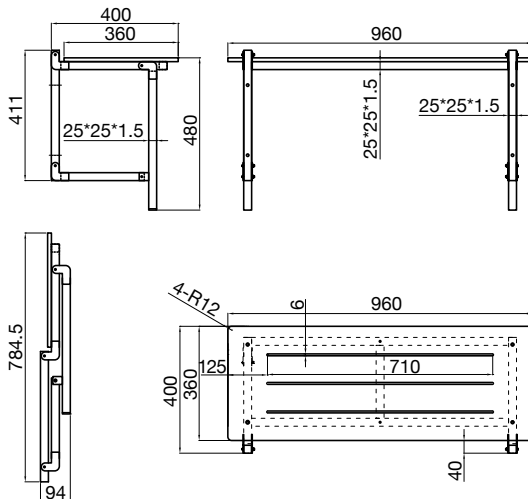
Wolfen Folding Shower Seat 600mm

9505996



Wolfen Folding Shower Seat 960mm

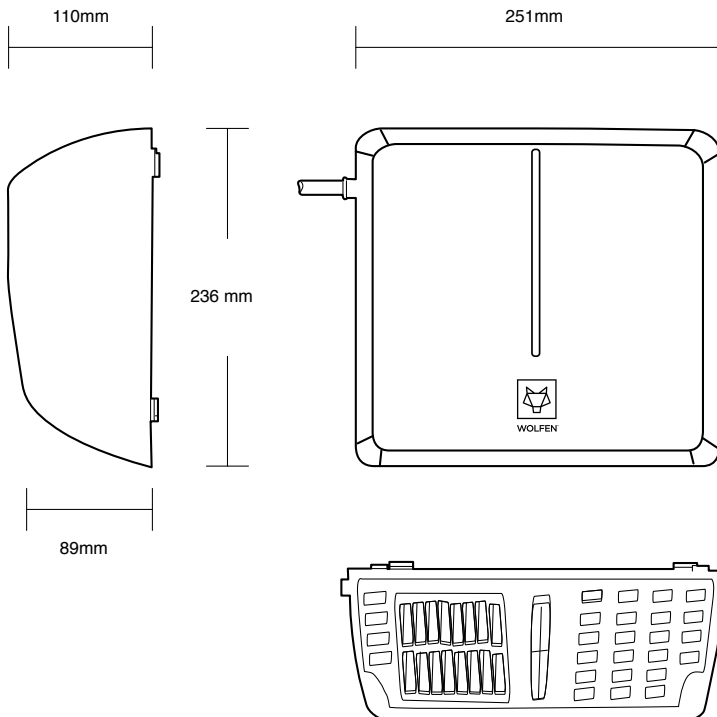
9505997



Wolfen Slimline Hand Dryer Stainless Steel

Product Code: 2039655

Features and Benefits	Technical Information						
Infection control features <ul style="list-style-type: none">• Eliminates need for paper towel receptacle• No germ catchment area from hand insertion	<table><tr><td>Product Code</td><td>2039655</td></tr><tr><td>Electrical Connection</td><td>220-240V 50-60 Hz</td></tr><tr><td>Nominal Output</td><td>1300W</td></tr></table>	Product Code	2039655	Electrical Connection	220-240V 50-60 Hz	Nominal Output	1300W
Product Code	2039655						
Electrical Connection	220-240V 50-60 Hz						
Nominal Output	1300W						
Commercial durability features <ul style="list-style-type: none">• Robust stainless steel case• IP 21 certification	<table><tr><td>Engine Performance</td><td>77W</td></tr></table>	Engine Performance	77W				
Engine Performance	77W						
Usage features <ul style="list-style-type: none">• Infra-red proximity sensor• Slimline design• Energy efficient – Turns off after 1 second of non-detection• 160 m3/hr blowing volume	<table><tr><td>Casing</td><td>Stainless Steel</td></tr><tr><td>IP Rating</td><td>IP21</td></tr><tr><td>Weight</td><td>2.9kg</td></tr></table>	Casing	Stainless Steel	IP Rating	IP21	Weight	2.9kg
Casing	Stainless Steel						
IP Rating	IP21						
Weight	2.9kg						
Anti-vandal features <ul style="list-style-type: none">• Allen key fixing	<table><tr><td>Blowing Volume</td><td>160m3/h</td></tr></table>	Blowing Volume	160m3/h				
Blowing Volume	160m3/h						
Installation and servicing <ul style="list-style-type: none">• 3-pin plug and lead attached• Suits standard power point• Easy installation template provided	<table><tr><td>Air Speed</td><td>17m/s</td></tr></table>	Air Speed	17m/s				
Air Speed	17m/s						
Application <ul style="list-style-type: none">• Offices• Sport and leisure facilities• Restaurants	<table><tr><td>Sound data</td><td></td></tr><tr><td>Sound pressure level at 2m distance in a free field</td><td>73 dB(A)</td></tr></table>	Sound data		Sound pressure level at 2m distance in a free field	73 dB(A)		
Sound data							
Sound pressure level at 2m distance in a free field	73 dB(A)						





Reece Product Quality Guarantee



You have purchased a quality product from Reece Australia Pty Ltd ABN 84 004 097 090 ("Reece"). This product is covered by a 5 year replacement product warranty and a 12 month warranty over spare parts and labour.

5 Year Warranty

This warranty covers faults in the product construction, material and assembly. Products which are within 5 years from the date of purchase, found upon inspection by an authorised Reece representative, to be defective in construction, material or assembly, will be repaired or exchanged with an equivalent product free of charge. Replaced items become Reece's property. All replacement products will be available for collection without charge to the customer at the nearest Reece branch to the customer's location, or elsewhere as agreed between the customer and Reece.

Labour and Spare Parts

The labour for the replacement of products and spare parts to which this warranty applies will be supplied by Reece or relevant supplier using licensed plumbers engaged by Reece or relevant supplier within 1 year from the date of purchase. Spare parts other than those listed in the Manufacturer's Provisions above, which are within 1 year from the date of purchase found upon inspection by an authorised Reece representative to be defective in construction, material or assembly, will be replaced free of charge.

Warranty Conditions

This warranty will apply only under all of the following conditions:

- The item has been installed by a licensed plumber
- Failure is due to a fault in the manufacture of the product
- Proof of purchase (including the date of purchase) is provided
- The installation of the product is in accordance with the instructions provided

This warranty does not cover products purchased as an ex-display without being fully checked and tested for sale by the manufacturer.

This warranty does not include faults caused by:

- Unsuitable or improper use
- Incorrect installation or installation not in accordance with the instructions provided
- Installation or part installation by the purchaser or any person other than a LICENSED PLUMBER
- Normal wear and tear
- Inadequate or complete lack of maintenance
- Chemical, electrochemical or electrical influences
- Harsh detergents or abrasive cleaners used on product finishes

Exclusions

To the fullest extent permitted by law, Reece excludes all liability for damage or injury to any person, damage to any property, and any indirect consequential or other loss or damage.

Claim Procedure

For all warranty queries customers are to contact the branch where the product was purchased. These details can be found on your purchase invoice.

Our goods come with guarantees that cannot be excluded under the Australian Consumer Law. You are entitled to a replacement or refund for a major failure and for compensation for any other reasonably foreseeable loss or damage. You are also entitled to have the goods repaired or replaced if the goods fail to be of acceptable quality and the failure does not amount to a major failure.

Don't risk it, use a licensed plumber.™



WOLFEN™

reece.com.au/wolfen

Call **1800 032 566** or visit **www.reece.com.au** for your nearest Reece store.

The manufacturer/distributor reserves the right to vary specifications or delete models from their range without prior notification. The manufacturer/distributor takes no responsibility for printing errors.

V3 [BROCHURE CODE 2131442]

