

# EnviroPod200™

ENVIROPOD.COM



**MEETING  
REGULATORY  
REQUIREMENTS  
IN AUSTRALIA  
SINCE 1998**

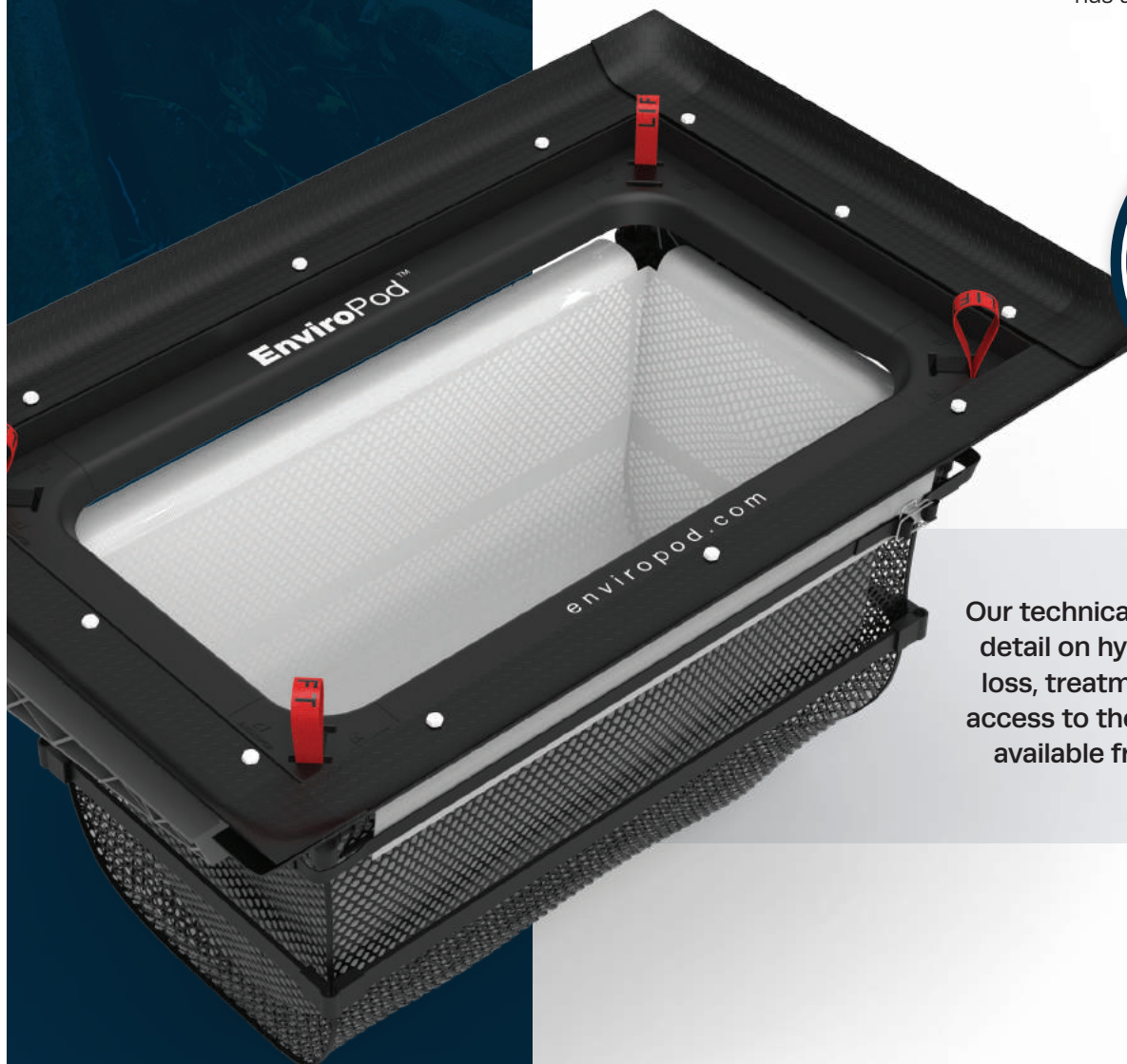


**USED AND  
APPROVED BY  
CITY COUNCILS  
ACROSS  
AUSTRALIA**

The EnviroPod200 is the leading stormwater gullypit basket in Australia, with over 20,000 installs nationwide.

Improvements over the last two decades have made the design easier for the contractor while still providing the same level of pollutant removal.

- » **EASY** to source, ship and handle
- » **EASY INSTALLATION** with fewer parts and a lighter frame, the installation process is quicker and saves you time
- » **FLEXIBILITY** The flexible design allows the system to be easily adjusted to fit any gullypit configuration
- » **HAND MAINTENANCE**  
The EnviroPod200 can be maintained quickly and easily by hand or by vacuum truck
- » **LIGHTWEIGHT & DURABLE**  
The lightweight yet durable design of the EnviroPod200 is a safer and a longer lasting product than the alternatives
- » **WARRANTY** The EnviroPod200 has an eight year limited warranty



Our technical guide is available for more detail on hydraulic performance, head loss, treatment and scour testing and access to the MUSIC model node are all available from [www.enviropod.com](http://www.enviropod.com)



**ENVIROPOD™**  
A STORMWATER360™ COMPANY

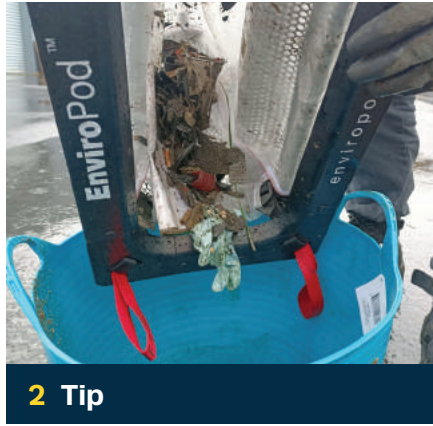
## EASY MAINTENANCE

Maintenance is a simple process that requires no confined space entry. Maintenance can be quickly undertaken using a vacuum truck or it can be maintained manually by hand.



**1 Lift**

Lift the EnviroPod200 out of the gullypit using the LIFT handles



**2 Tip**

Tip the contents out of EnviroPod200 into suitable receptacle for contents



**3 Rinse**

Rinse the liner bag to prevent clogging



**4 Reuse**

Reuse the EnviroPod200 by placing securely back into the surrounding frame and seal, and close grate.

## INSTALLATION

Quick and easy installation.



Scan QR code to download installation manual



## ENVIROPOD200 MODELS AND SPECIFICATION

Catch basin size (mm)	Standard manhole size <sup>1</sup> (mm)	EnviroPod200 model	Min basin size (mm)		Max basin size (mm)	
			Length	Width	Length	Width
450x450	DN600, DN750	EP4545-200	435	377	470	470
600x600	DN1050	EP6060-200	570	512	620	620
900x600	–	EP9060-200	872	447	920	620
900x900	–	EP9060-200 <sup>2</sup>	872	447	920	620
1200x1200	–	2 x EP9060-200 <sup>3</sup>	872	447	1230	1230

<sup>1</sup>Manhole adaptor bracket and seal kit included. <sup>2</sup>With 900x900 seal kit adaptor kit. <sup>3</sup>With 1200x1200 seal kit adaptor kit.



CALL 1800 032 566 OR VISIT REECE.COM.AU FOR YOUR NEAREST REECE STORE

